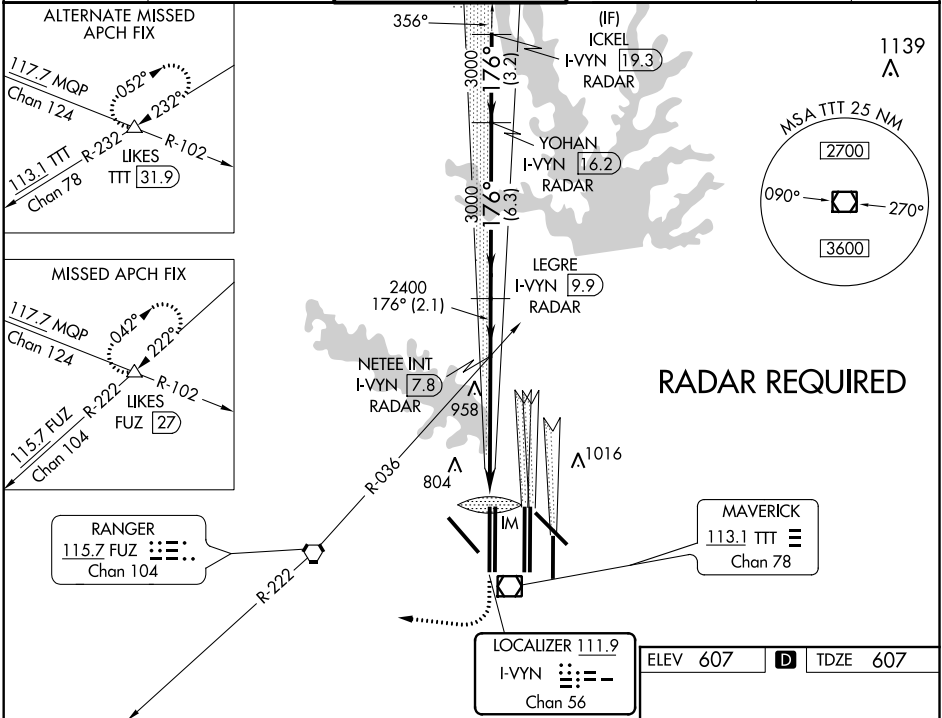


| | | | | |
|--|------------------------|---|---|--|
| LOC/DME I-VYIN 111.9 Chan 56 | APP CRS 176° | Rwy Idg TDZE Apt Elev 13400 607 607 | ILS RWY 18R (CAT II & III) DALLAS-FORT WORTH INTL (DFW) | |
|--|------------------------|---|---|--|

| | | | | |
|--|------------------------------------|---|---|---------------------------|
| DME or RADAR required. Simultaneous approach authorized with Rwy 17 L/C/R. | | ALSIF-2 | MISSED APPROACH: Climb to 1100 then climbing right turn to 3000 on heading 250° and FUZ VORTAC R-222 to LIKES INT/FUZ VORTAC 27 DME and hold. | |
| D-ATIS ARR 123.775 DEP 135.925 | REGIONAL APP CON 118.425 | DFW TOWER 126.55 127.5 EAST 124.15 134.9 WEST | GND CON 121.65 121.8 EAST 121.85 WEST | CLNC DEL 128.25 |
| | | CPDLC | | |



| | | | | | |
|--|-----------------------------|-----------------------------------|-------------------------------|--------------------------------|----------------------------|
| 1100 ↑ | 3000 hdg 250° | FUZ R-222 | LIKES △ | ICKEL I-VYN [19.3] RADAR | |
| VGSI and ILS glidepath not coincident (VGSI Angle 3.00/TCH 74). | | | | | |
| IM 701 | | NETEE INT I-VYN [7.8] RADAR | LEGRE I-VYN [9.9] RADAR | YOHAN I-VYN [16.2] RADAR | 4000 GS 3.00° TCH 59 |
| 1160 | | 5.5 NM | 2.1 NM | 6.3 NM | 3.2 NM |
| CATEGORY | A | B | C | D | |
| S-ILS 18R | CAT II RA 106/12 100 DA 707 | | | | |
| S-ILS 18R | CAT IIIa RVR 07 | | | | |
| S-ILS 18R | CAT IIIb RVR 06 | | | | |
| S-ILS 18R | CAT IIIc NA | | | | |
| CATEGORY II & III ILS - SPECIAL AIRCREW & AIRCRAFT CERTIFICATION REQUIRED | | | | | |

The diagram illustrates the ILS approach for runway 18R. It shows the glide path starting at 1160 feet and rising to 4000 feet at the 6.3 NM mark. The ILS frequency is 113.1 MHz. The diagram also shows the positions of various navigation aids, including the ILS, VOR, and VORTAC stations, and the locations of the runway lights and taxiway lights. The diagram is labeled with various frequencies and distances, and includes a scale bar for 1 NM.

HIRL all Rwy's
REIL Rwy's 13L and 31L
TDZ/CL all Rwy's except 13L and 31L