

APP CRS
322°

Rwy Idg
4209

TDZE
1313

Apt Elev
1321

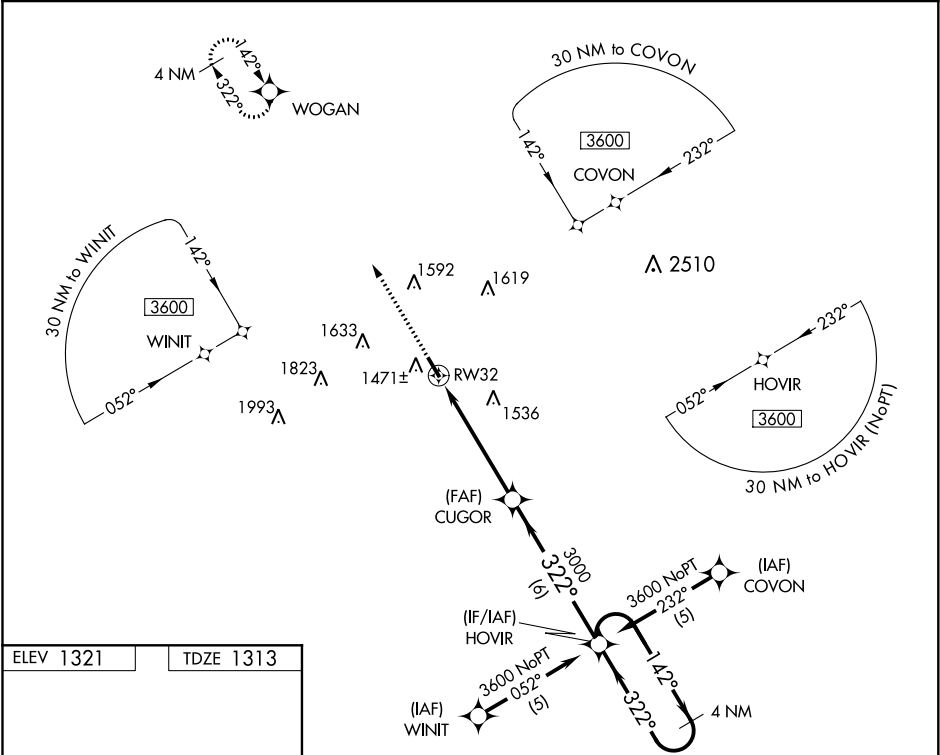
RNAV (GPS) RWY 32
STEPHENVILLE CLARK RGNL (SEP)

▼

DME/DME RNP-0.3 NA. Rwy 32 helicopter visibility reduction below 1 SM NA. Straight-in Rwy 32 NA at night, circling Rwy 32 NA at night.

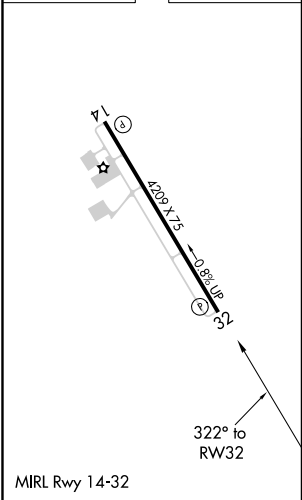
MISSED APPROACH: Climb to 3600 direct WOGAN and hold.

AWOS-3 118.075	FORT WORTH CENTER 127.15 314.0	UNICOM 122.8 (CTAF)
--------------------------	--	-------------------------------



ELEV 1321

TDZE 1313



<div>3600 ↑</div>		<div>WOGAN ✦</div>		<div>HOVIR</div>		<div>4 NM Holding Pattern</div>			
<div>RW32</div>		<div>CUGOR</div>		<div>3000</div>		<div>142° → ← 322° 3600</div>			
<div>5.2 NM</div>		<div>6 NM</div>							
CATEGORY		A		B		C		D	
LNAV MDA		1820-1		507 (500-1)		1820-1½		507 (500-1½)	
CIRCLING		1820-1		499 (500-1)		1820-1½ 499 (500-1½)		1960-2 639 (700-2)	

SC-2, 03 DEC 2020 to 31 DEC 2020

SC-2, 03 DEC 2020 to 31 DEC 2020