

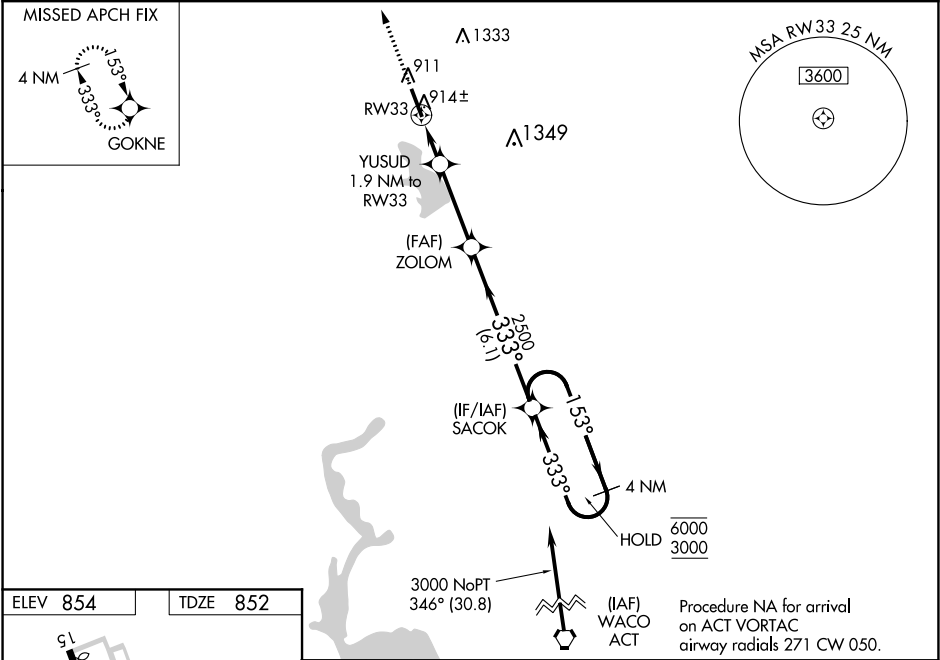
WAAS CH 82632 W33A	APP CRS 333°	Rwy Idg TDZE Apt Elev	5697 852 854
--	------------------------	-----------------------------	---

RNAV (GPS) RWY 33

CLEBURNE RGNL (CPT)

RNP APCH.	MISSED APPROACH: Climb to 3000 direct GOKNE and hold.
▼ For uncompensated Baro-VNAV systems, LNAV/VNAV NA below -16°C or above 54°C. Rwy 33 helicopter visibility reduction below ¾ SM NA. ▲	

AWOS-3 119.525	REGIONAL APP CON 135.975 379.9	UNICOM 122.8 (CTAF) 0
--------------------------	--	---------------------------------



3000 ↑ GOKNE	*LNAV only.			
CATEGORY	A	B	C	D
LPV DA	1102-7/8 250 (300-7/8)			
LNAV/VNAV DA	1102-7/8 250 (300-7/8)			
LNAV MDA	1180-1 328 (400-1)			
CIRCLING	1400-1	546 (600-1)	1680-2½ 826 (900-2½)	1700-2¾ 846 (900-2¾)