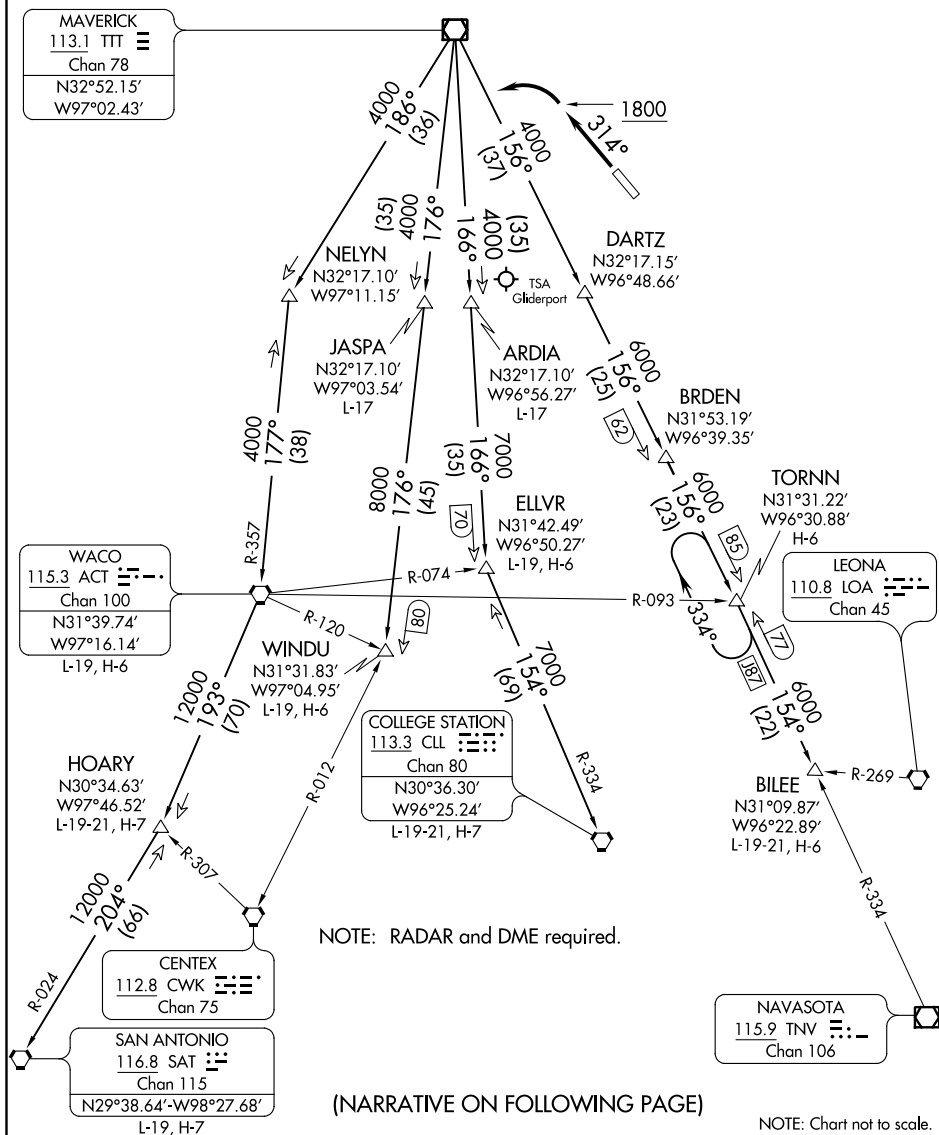


JOE POOL ONE DEPARTURE

REGIONAL DEP CON
125.2 343.65
CTAF
122.7

Rwy 31: 300-1¼ or standard with a minimum climb of 205' per NM to 800, or alternatively, with standard takeoff minimums and a normal 200' per NM climb gradient, takeoff must occur no later than 1200' prior to DER.



NOTE: Chart not to scale.