

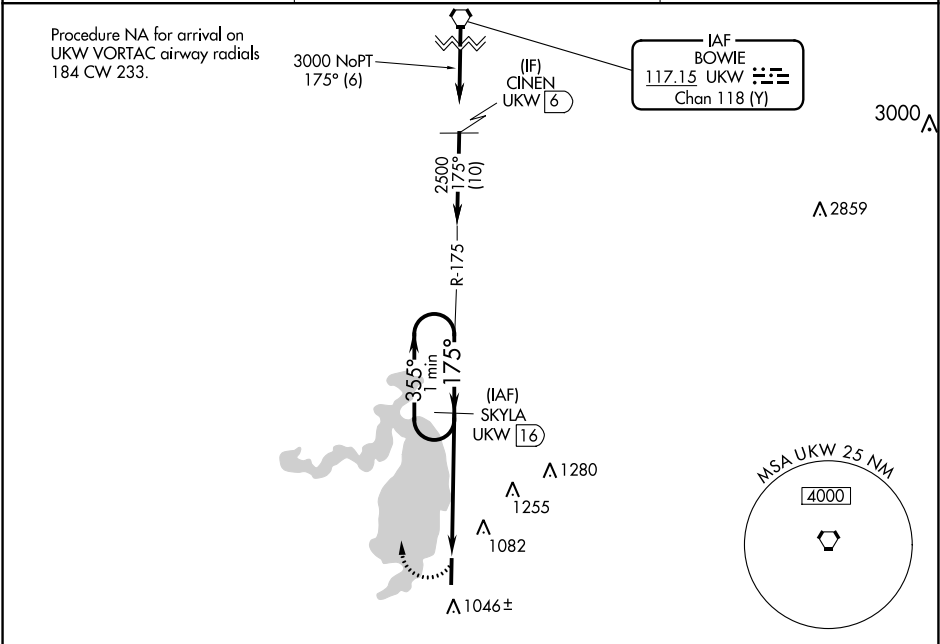
VORTAC UKW <b>117.15</b> Chan <b>118</b> (Y)	APP CRS <b>175°</b>	Rwy Idg TDZE Apt Elev	<b>5005</b> <b>842</b> <b>864</b>
--	------------------------	-----------------------------	---

VOR/DME RWY 18  
BRIDGEPORT MUNI (XBP)

**⚠** Visibility reduction by helicopters NA. When local altimeter setting not received, use Decatur altimeter setting and increase all MDA 60 feet.

**⚠** MISSED APPROACH: Climbing right turn to 2800 via UKW VORTAC R-175 to SKYLA/UKW 16 DME and hold.

AWOS-3 <b>119.225</b>	FORT WORTH CENTER <b>127.0 360.6</b>	UNICOM <b>123.0</b> (CTAF)
--------------------------	---	-------------------------------



**2800**  
UKW R-175

**SKYLA UKW 16**

**2500**  
UKW 21.3

**2800**  
One Minute Holding Pattern

**355°**  
**175°**

**2.95°**  
TCH 40

**5.3 NM**

**175° 5.3 NM from FAF**

**81**  
**1.1% UP**  
**6.75**  
**5000**  
**36**

**33°10'N - 97°50'W**

CATEGORY	A	B	C	D
S-18	1440-1 598 (600-1)	1440-1¼ 598 (600-1¼)	NA	
CIRCLING	1480-1 616 (700-1)	1480-1¼ 616 (700-1¼)	NA	

MRL Rwy 18-36

SC-2, 03 DEC 2020 to 31 DEC 2020

SC-2, 03 DEC 2020 to 31 DEC 2020