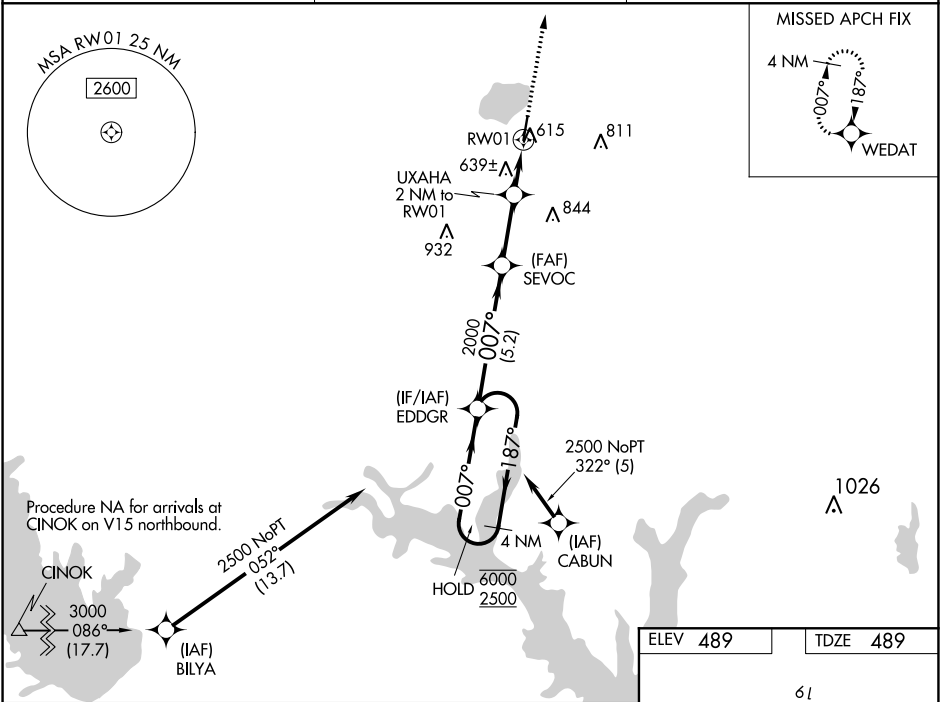


WAAS CH 86324 W01A	APP CRS 007°	Rwy Idg TDZE Apt Elev	5001 489 489
--	------------------------	-----------------------------	---

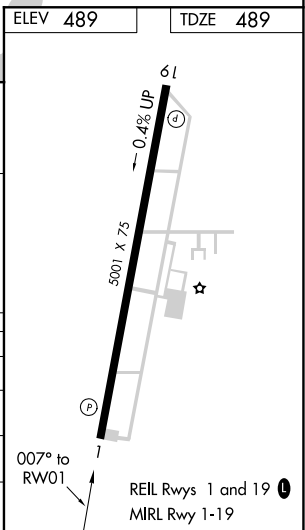
RNAV (GPS) RWY 1
SULPHUR SPRINGS MUNI (SLR)

RNP APCH. <div><div>▼</div> Circling NA east of Rwy 1-19. Rwy 1 helicopter visibility reduction below ¾ SM NA. <div>▲</div> For uncompensated Baro-VNAV systems, UNAV/VNAV NA below -15°C or above 54°C.</div>	MISSED APPROACH: Climb to 3000 direct WEDAT and hold.
---	---

AWOS-3 118.35	FORT WORTH CENTER 132.025 360.75	UNICOM 123.075 (CTAF) 0
-------------------------	--	-----------------------------------



4 NM Holding Pattern		EDDGR	SEVOC	UXAHA	WEDAT
6000 ← 187°		2000	2000	2000	3000
2500 → 007°		007°	007°	007°	007°
GP 3.00°					
TCH 56					
		5.2 NM	2.6 NM	0.6 NM	1.4 NM
CATEGORY	A	B	C	D	
LPV DA	803-1	314 (400-1)		NA	
LNNAV/VNAV DA	975-1½	486 (500-1½)		NA	
LNNAV MDA	1000-1	511 (600-1)	1000-1¾	511 (600-1½)	NA
CIRCLING	1000-1	511 (600-1)	1000-1½	511 (600-1½)	NA



SC-2, 03 DEC 2020 to 31 DEC 2020

SC-2, 03 DEC 2020 to 31 DEC 2020