

WAAS CH <b>65731</b> <b>W17A</b>	APP CRS <b>174°</b>	Rwy Idg <b>5862</b> TDZE <b>3244</b> Apt Elev <b>3245</b>
--	------------------------	---

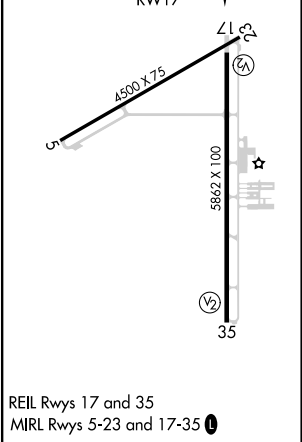
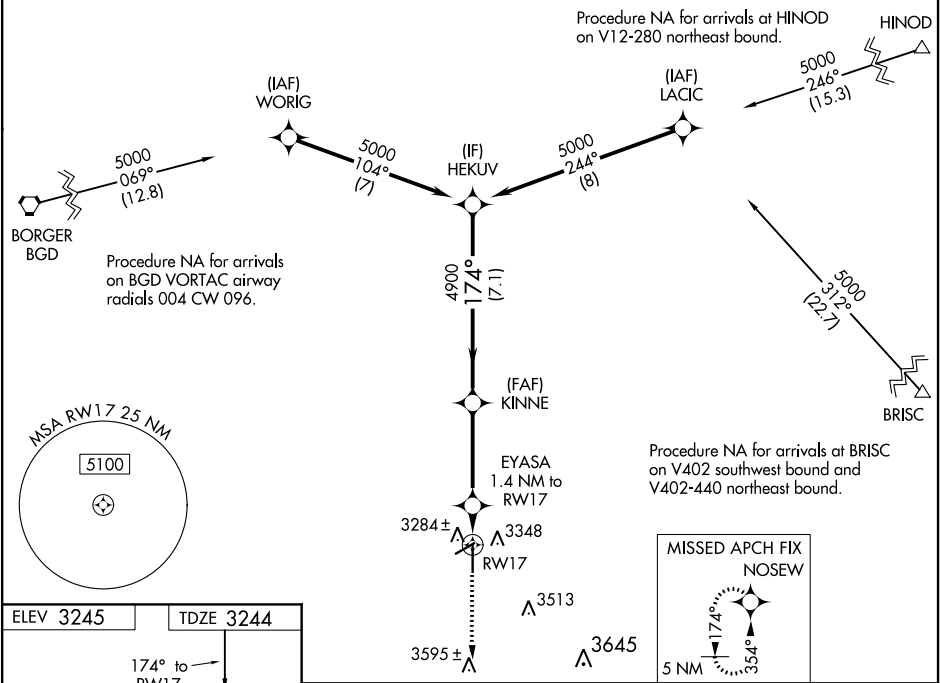
RNAV (GPS) RWY 17

PERRY LEFORS FIELD (PPA)

**⚠** Baro-VNAV NA when using Borger altimeter setting. For uncompensated Baro-VNAV systems, LNAV/VNAV NA below -21°C (-5°F) or above 54°C (130°F). DME/DME RNP-0.3 NA. When local altimeter setting not received, use Borger altimeter setting and increase all DA 73 feet and all MDA 80 feet. Increase LPV and LNAV/VNAV all Cats and LNAV Cat C/D visibility ½ mile. Procedure NA at night. Helicopter visibility reduction below 1 SM NA.

MISSED APPROACH: Climb to 6000 direct NOSEW and hold, continue climb-in-hold to 6000.

AWOS-3 <b>118.725</b>	ALBUQUERQUE CENTER <b>127.85 285.475</b>	UNICOM <b>122.7 (CTAF) 0</b>
--------------------------	---	---------------------------------



6000

NOSEW

\*LNAV only.

EYASA

1.4 NM to RW17

RW17

\*3720

KINNE

4900

HEKUV

5000

GP 3.00°

TCH 45

1.4 NM

3.7 NM

7.1 NM

174°

4900

CATEGORY	A	B	C	D
LPV DA	3494-1 250 (300-1)			
LNAV/VNAV DA	3494-1 250 (300-1)			
LNAV MDA	3540-1 296 (300-1)			
CIRCLING	3700-1 455 (500-1)	3700-1½ 455 (500-1½)	3800-2 555 (600-2)	