

VORTAC BYP	APP CRS	Rwy Idg	N/A
114.6	280°	TDZE	N/A
Chan 93		Apt Elev	746

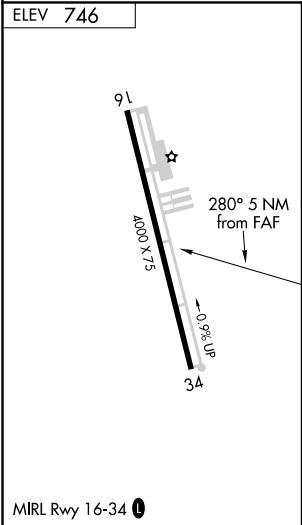
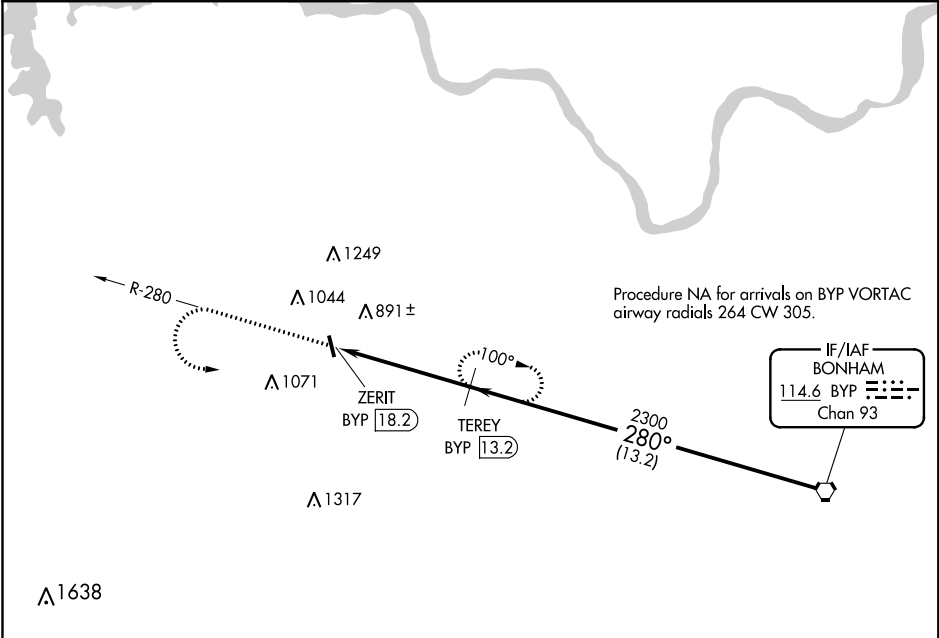
VOR/DME-A
SHERMAN MUNI (SWI)

⚠ NA

Use Sherman/Denison altimeter setting, when not received, use Dallas-Love Field altimeter setting and increase all MDA 140 feet, increase visibility Cat B ¼ mile, Cat C ½ mile, and Cat D ¾ mile. Procedure NA at night. Helicopter visibility reduction below 1 SM NA.

MISSED APPROACH: Climb to 2300, then climbing left turn to 2400 on BYP R-280 to TEREY/13.2 DME and hold.

FORT WORTH CENTER 124.75 323.0	UNICOM 122.8 (CTAF) 0
-----------------------------------	--------------------------



2300	2400 BYP R-280	TEREY BYP 13.2	TEREY BYP 13.2	BYP VORTAC
2300	ZERIT BYP 18.2	2300	280°	2300
	5 NM	13.2 NM		
CATEGORY	A	B	C	D
CIRCLING	1300-1 554 (600-1)	1420-1 674 (700-1)	1620-2½ 874 (900-2½)	1620-2¾ 874 (900-2¾)