

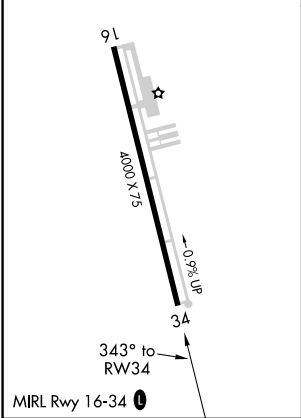
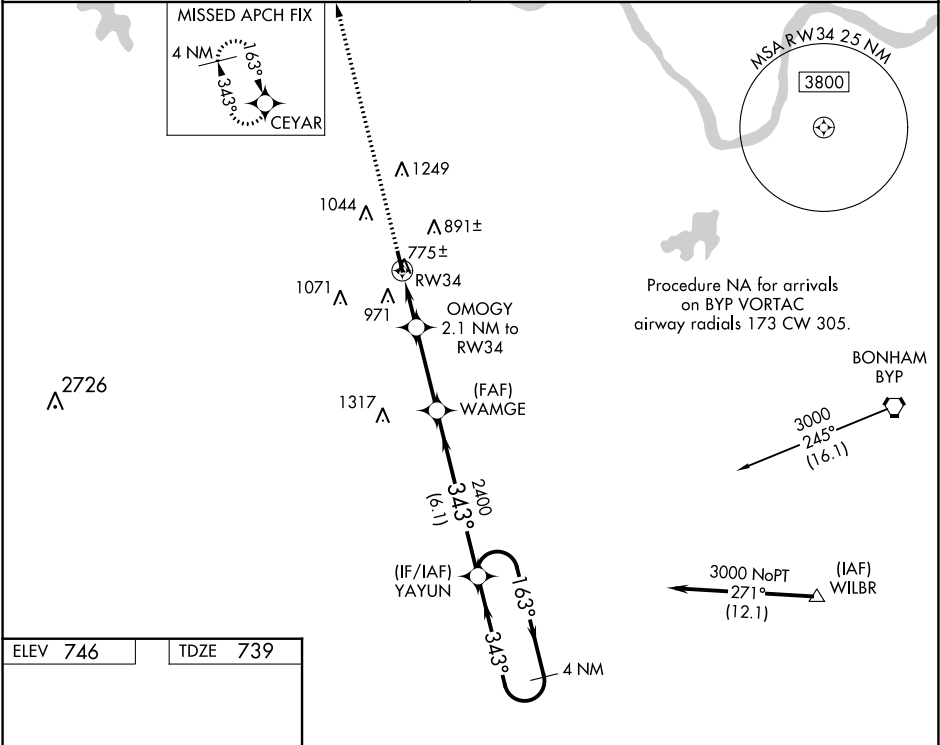
WAAS CH <b>86534</b> <b>W34A</b>	APP CRS <b>343°</b>	Rwy Idg TDZE <b>739</b> Apt Elev <b>746</b>	<b>4000</b>
--	------------------------	---	-------------

RNAV (GPS) RWY 34

SHERMAN MUNI (SWI)

<div><div>NA</div><div>DME/DME RNP-0.3 NA. Use Sherman/Denison altimeter setting, if not received, use Dallas-Love Field altimeter setting and increase all MDA 140 feet; increase LP and LNAV Cat C visibility 3⁄8 mile, Circling Cat B visibility 1⁄4 mile and Cat C visibility 1⁄2 mile. Procedure NA at night. Helicopter visibility reduction below 1 SM NA.</div></div>	<div>MISSED APPROACH: Climb to 3000 direct CEYAR and hold.</div>
---	--

FORT WORTH CENTER <b>124.75 323.0</b>	UNICOM <b>122.8 (CTAF) 0</b>
--	---------------------------------



3000	CEYAR				
*LNAV only.					
OMOGY 2.1 NM to RW34	WAMGE	YAYUN	4 NM Holding Pattern		
RW34	2400	3000			
2.1 NM	3.1 NM	6.1 NM			
CATEGORY	A	B	C	D	
LP MDA	1060-1	321 (400-1)		NA	
LNAV MDA	1100-1	361 (400-1)	1100-1 1⁄8 361 (400-1 1⁄8)	NA	
CIRCLING	1300-1 554 (600-1)	1420-1 674 (700-1)	1620-2 1⁄2 874 (900-2 1⁄2)	NA	