

VOR/DME TTT	APP CRS	Rwy Idg	6080
113.1	005°	TDZE	620
Chan 78		Apt Elev	628

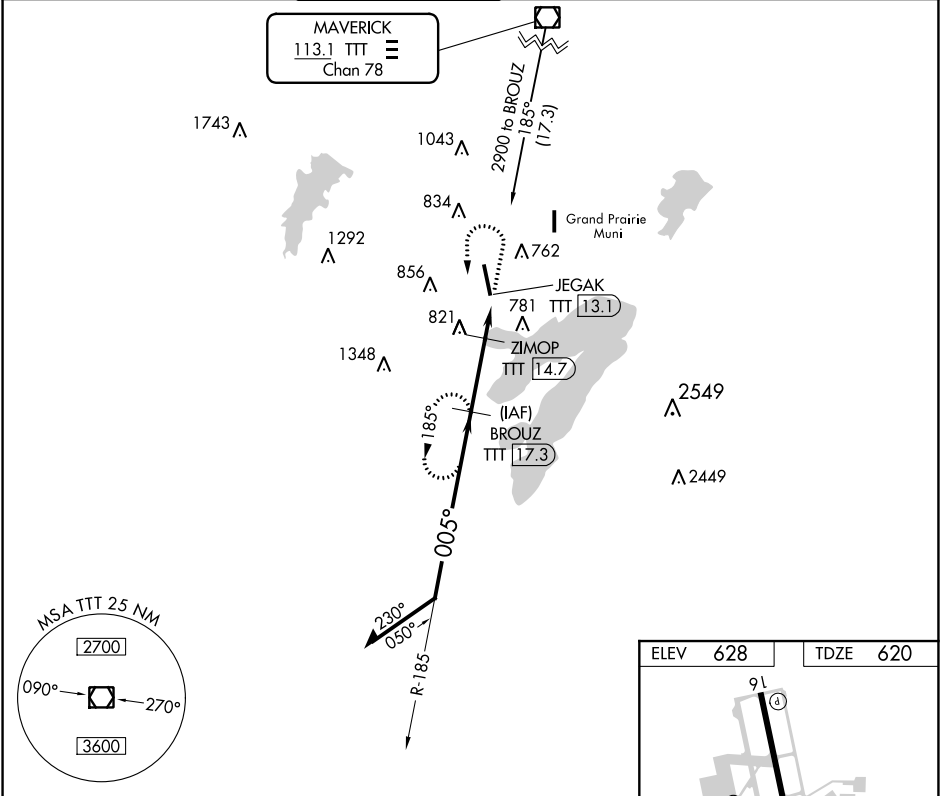
VOR/DME RWY 34  
ARLINGTON MUNI (GKY)

**⚠** Inoperative table does not apply. Visibility reduction by helicopters NA. When local altimeter setting not received, use Grand Prairie Muni altimeter setting.

**MALSR**

**MISSED APPROACH:** Climb to 1600 then climbing left turn to 2600 via heading 150° and TTT VOR/DME R-185 to BROUZ/17.3 DME and hold.

ASOS 127.375	REGIONAL APP CON 135.975 379.9	ARLINGTON TOWER ★ 128.625	GND CON 121.875	CLNC DEL 121.875	CLNC DEL 118.85 (When twr closed)	CTAF 128.625
-----------------	-----------------------------------	------------------------------	--------------------	---------------------	---	-----------------



Remain within 10 NM

2600 → 185° → BROUZ TTT 17.3

2600 → 005° → 2000

2000 → 2.97° TCH 55 → 1140

1140 → 1.6 NM → JEGAK TTT 13.1

1140 → 2.7 NM → ZIMOP TTT 14.7

1600	2600	BROUZ TTT 17.3
↑	hdg 150°	
	TTT R-185	

CATEGORY	A	B	C	D
S-34	1080-1	460 (500-1)	1080-1¼ 460 (500-1¼)	NA
CIRCLING	1100-1	472 (500-1)	1100-1½ 472 (500-1½)	NA

