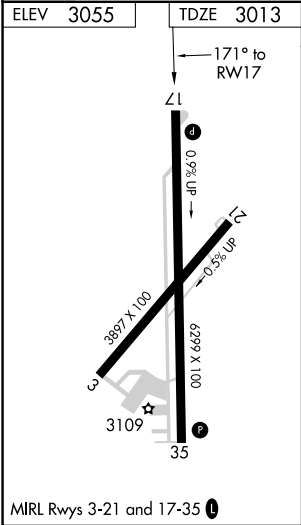
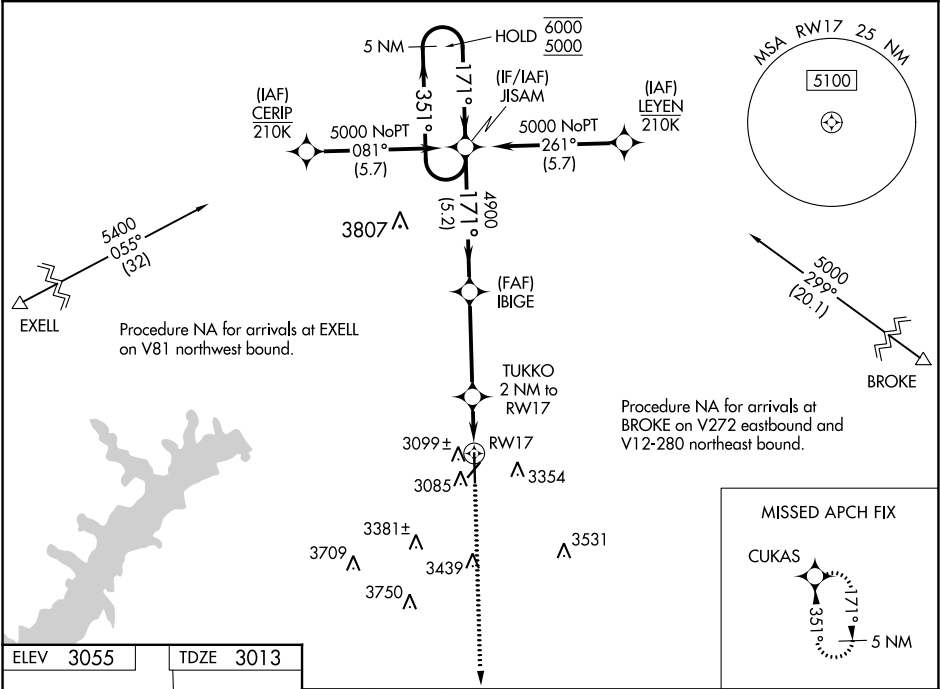


WAAS CH 99442 W17A	APP CRS 171°	Rwy Idg 6299 TDZE 3013 Apt Elev 3055
--	------------------------	---

RNAV (GPS) RWY 17
HUTCHINSON COUNTY (BGD)

RNP APCH.		MISSED APPROACH: Climb to 5100 direct CUKAS and hold.
ASOS 118.325	AMARILLO APP CON ★ 119.5 307.0	UNICOM 123.0 (CTAF) 0



5100 CUKAS		JISAM 5 NM Holding Pattern			
*LNAV only.		TUKKO 2 NM to RW17	IBIGE 4900	351° → 6000 ← 171° 5000	
RW17		*1 NM to RW17	*3700	GP 3.00° TCH 58	
1 NM		1 NM	3.8 NM	5.2 NM	
CATEGORY	A	B	C	D	
LPV DA	3263-1		250 (300-1)		
LNAV/VNAV DA	3280-1		267 (300-1)		
LNAV MDA	3360-1		347 (400-1)		
CIRCLING	3620-1 565 (600-1)	3660-1 605 (700-1)	3760-2 705 (800-2)	3760-2¼ 705 (800-2¼)	