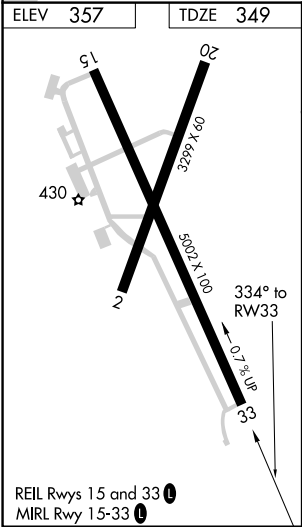
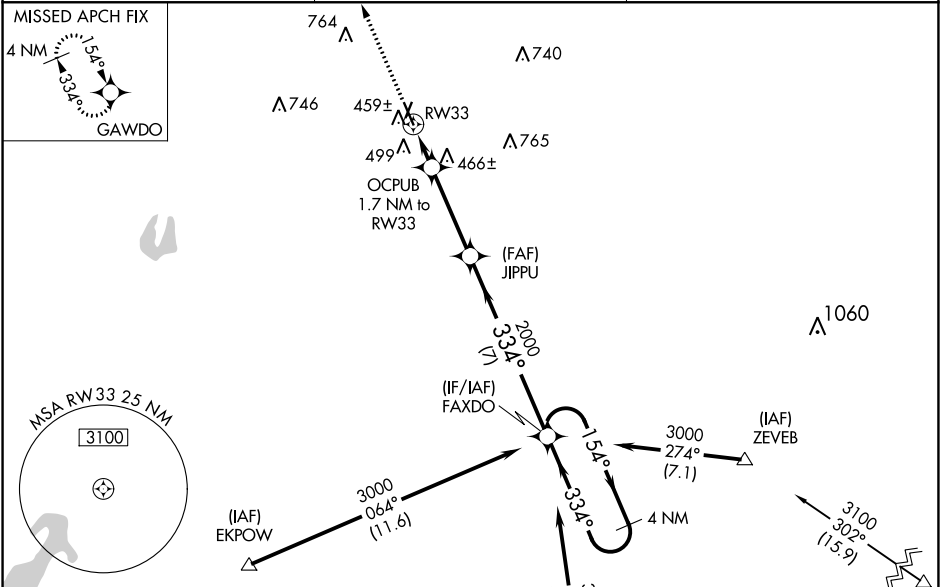


WAAS CH 86926 W33A	APP CRS 334°	Rwy Idg TDZE Apt Elev	5002 349 357
--	------------------------	-----------------------------	---

RNAV (GPS) RWY 33
HARRISON COUNTY (ASL)

RNP APCH.	Baro-VNAV NA when using Longview altimeter setting. For uncompensated Baro-VNAV systems, LNAV/VNAV NA below -5°C (23°F) or above 40°C (104°F). Rwy 33 helicopter visibility reduction below ¾ SM NA. When local altimeter setting not received, use Longview altimeter setting and increase all DA 52 feet and all MDA 60 feet; increase LPV all Cats visibility ½ mile, LNAV/VNAV all Cats and LNAV Cat C visibility ¼ mile.	MISSED APPROACH: Climb to 3000 direct GAWDO and hold.
-----------	---	--

AWOS-3 118.675	SHREVEPORT APP CON 119.9 335.55	UNICOM 122.8 (CTAF) 0
--------------------------	---	---------------------------------



3000	GAWDO	VGSI and RNAV glidepath not coincident.	FAXDO	4 NM Holding Pattern
*LNAV only.	OCPUB 1.7 NW to RW33	JIPPU 2000	154° → 3000	← 334°
RW33	900*	2000	GP 3.00°	TCH 40
1.7 NM	3.5 NM	7 NM		
CATEGORY	A	B	C	D
LPV DA	635-1	286 (300-1)		NA
LNAV/VNAV DA	658-1	309 (300-1)		NA
LNAV MDA	720-1	371 (400-1)	720-1½ 371 (400-1½)	NA

SC-2, 03 DEC 2020 to 31 DEC 2020

SC-2, 03 DEC 2020 to 31 DEC 2020