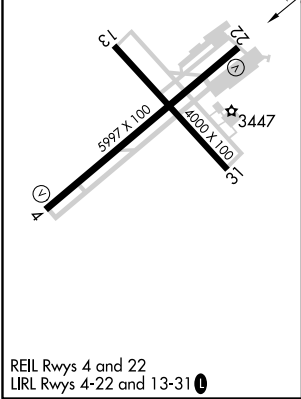
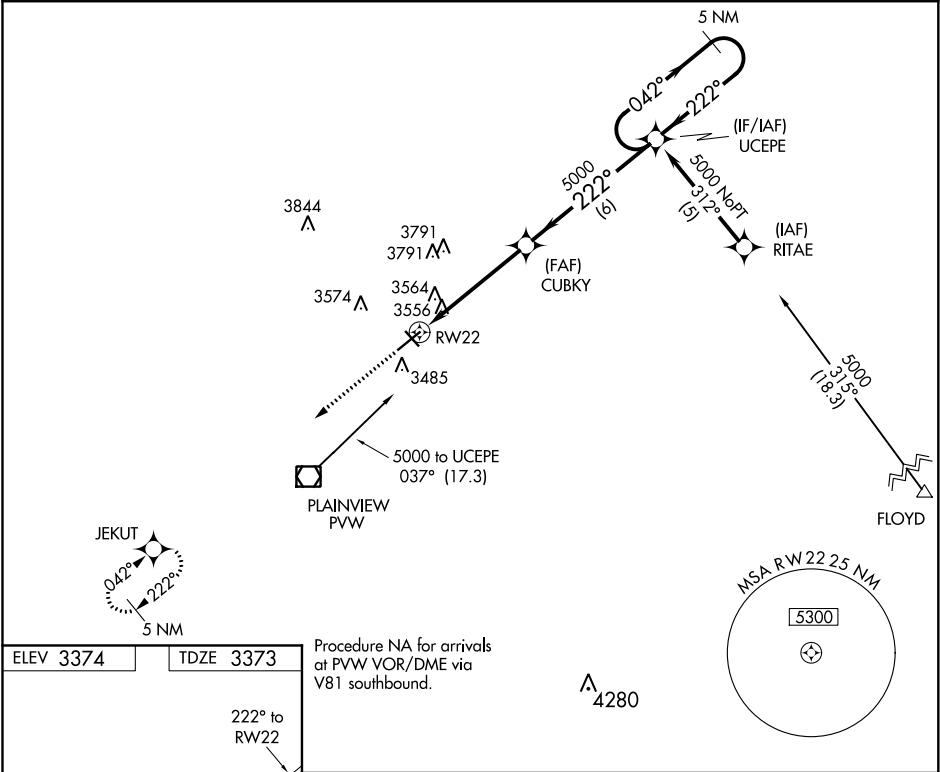


APP CRS	Rwy Idg	5997
222°	TDZE	3373
	Apt Elev	3374

RNAV (GPS) RWY 22  
HALE COUNTY (PVW)

<p><b>▼</b> DME/DME RNP-0.3 NA. If local altimeter setting not received, use Lubbock altimeter setting and increase all MDAs 100 feet.</p> <p><b>▲</b> Visibility reduction by helicopters NA.</p>	<p>MISSED APPROACH: Climb to 5100 direct JEKUT and hold.</p>
--	--

ASOS 119.675	LUBBOCK APP CON 119.2 351.8	CLNC DEL 121.7	UNICOM 123.0 (CTAF) <b>0</b>
-----------------	--------------------------------	-------------------	---------------------------------



5100

JEKUT

VGSI and descent angles not coincident  
(VGSI angle 3.50/TCH 54).

CUBKY

UCEPE

5 NM  
Holding Pattern

RW22

222°

5000

042°

5000

222°

4.9 NM

6 NM

3.04°

TCH 45

CATEGORY	A	B	C	D
LNAV MDA	3820-1	447 (500-1)	3820-1¼ 447 (500-1¼)	3820-1½ 447 (500-1½)
CIRCLING	3920-1 546 (600-1)	3940-1 566 (600-1)	3940-1½ 566 (600-1½)	3940-2 566 (600-2)

SC-2, 03 DEC 2020 to 31 DEC 2020

SC-2, 03 DEC 2020 to 31 DEC 2020