

WAAS CH <b>78225</b> <b>W35A</b>	APP CRS <b>346°</b>	Rwy Idg <b>5840</b> TDZE <b>2355</b> Apt Elev <b>2380</b>
--	------------------------	---

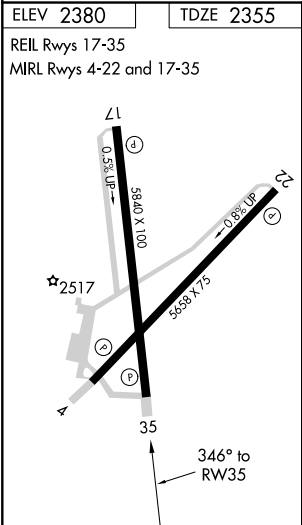
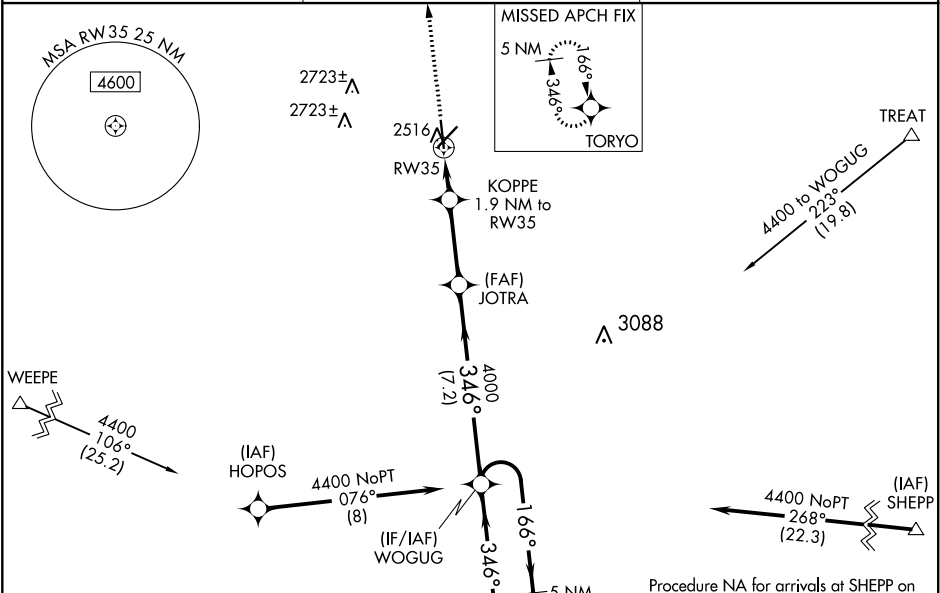
RNAV (GPS) RWY 35

AVENGER FIELD (SWW)

**⚠** When VGSI inop, Circling Rwy 17 and 22 NA at night. Baro-VNAV NA when using Snyder altimeter setting. For uncompensated Baro-VNAV systems, LNAV/VNAV NA below -19°C (-2°F) or above 29°C (84°F). When VGSI inop, Straight-in/Circling Rwy 35 NA at night. DME/DME RNP-0.3 NA. Visibility reduction by helicopters NA. When local altimeter setting is not received, use Snyder altimeter setting and increase all DA 72 feet and all MDA 80 feet. Increase LNAV/VNAV visibility all Cats ¼ mile and LNAV visibility Cats C and D ⅛ mile.

MISSED APPROACH:  
Climb to 4400 direct  
TORYO and hold.

AWOS-3 <b>119.025</b>	ABILENE APP CON <b>127.2 282.3</b>	UNICOM <b>122.8 (CTAF)</b>
--------------------------	---------------------------------------	-------------------------------



4400

↑

TORYO

✦

VGSI and RNAV glidepath not coincident (VGSI Angle 3.00/TCH 40).

5 NM Holding Pattern

\*LNAV only.

KOPPE

1.9 NM to RW35

JOTRA

4000

WOGUG

166° → 4400

← 346°

GP 3.00° TCH 52

RW35

↙

\*3020

↘

4000

↙

1.9 NM

3.1 NM

7.2 NM

CATEGORY	A	B	C	D
LPV DA	2605-1 250 (300-1)			
LNAV/VNAV DA	2713-1½ 358 (400-1½)			
LNAV MDA	2820-1 465 (500-1)	2820-1½ 465 (500-1½)		
CIRCLING	2880-1 500 (500-1)	2880-1½ 500 (500-1½)	2940-2 560 (600-2)	