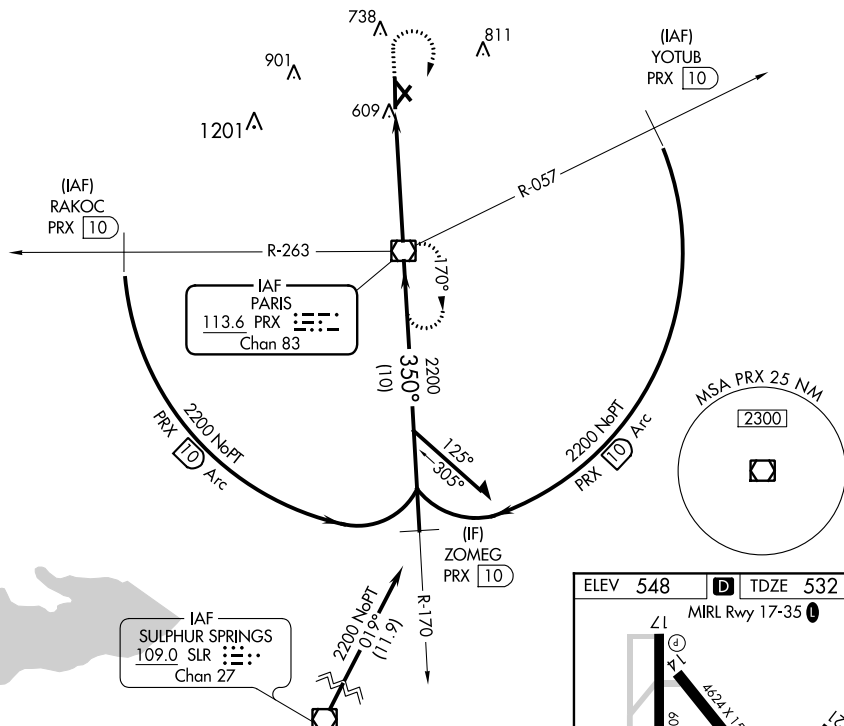


20142

VOR RWY 35
COX FIELD (PRX)

MISSED APPROACH: Climb to 2000 then climbing right turn to 2200 direct PRX VOR/DME.

UNICOM
122.975 (CTAF) **L**



Knots	60	90	120	150	180
Min:Sec	5:12	3:28	2:36	2:05	1:44

COX FIELD (PRX)
VOR RWY 35

SC-2, 03 DEC 2020 to 31 DEC 2020