

WAAS CH 69401 W17A	APP CRS 175°	Rwy Idg 6002 TDZE 541 Apt Elev 548
--	------------------------	---

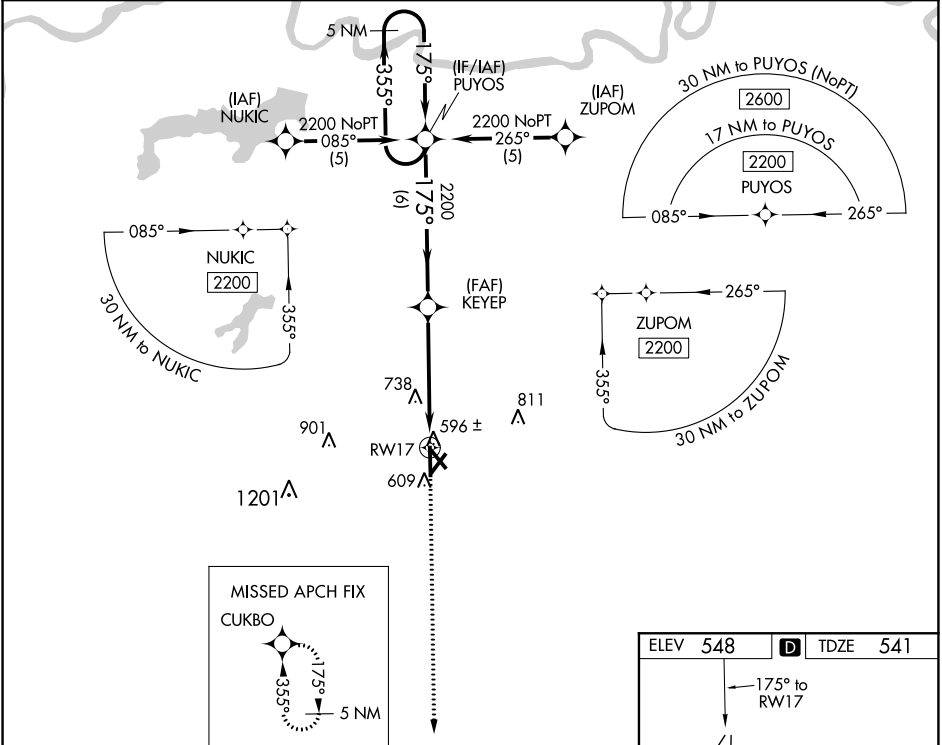
RNAV (GPS) RWY 17
COX FIELD (PR.X)

⚠ DME/DME RNP-0.3 NA. Visibility reduction by helicopters NA. If local altimeter setting not received, use Sulphur Springs altimeter setting and increase all DAs/MDAs 80 feet.

⚠ For uncompensated BARO-VNAV systems, LNAV/VNAV NA below -16°C (4°F) or above 47°C (118°F). BARO-VNAV NA when using Sulphur Springs altimeter setting.

MISSED APPROACH: Climb to 2200 direct CUKBO and hold.

AWOS-3PT 119.675	FORT WORTH CENTER 124.875	UNICOM 122.975 (CTAF) 0
----------------------------	-------------------------------------	-----------------------------------



5 NM Holding Pattern				
PUYOS				
KEYEP				
RW17				
2200				
GP 3.00° TCH 40				
6 NM 5 NM				
CATEGORY	A	B	C	D
LPV DA	791-1		250 (300-1)	
LNAV/DA VNAV	846-1		305 (300-1)	
LNAV MDA	1040-1	499 (500-1)	1040-1½ 499 (500-1½)	1040-1½ 499 (500-1½)
CIRCLING	1040-1	492 (500-1)	1040-1½ 492 (500-1½)	1100-2 552 (600-2)

