

APP CRS
335°

Rwy Idg
TDZE
Apt Elev

6431
645
645

RNAV (GPS) RWY 33

ADDISON (ADS)

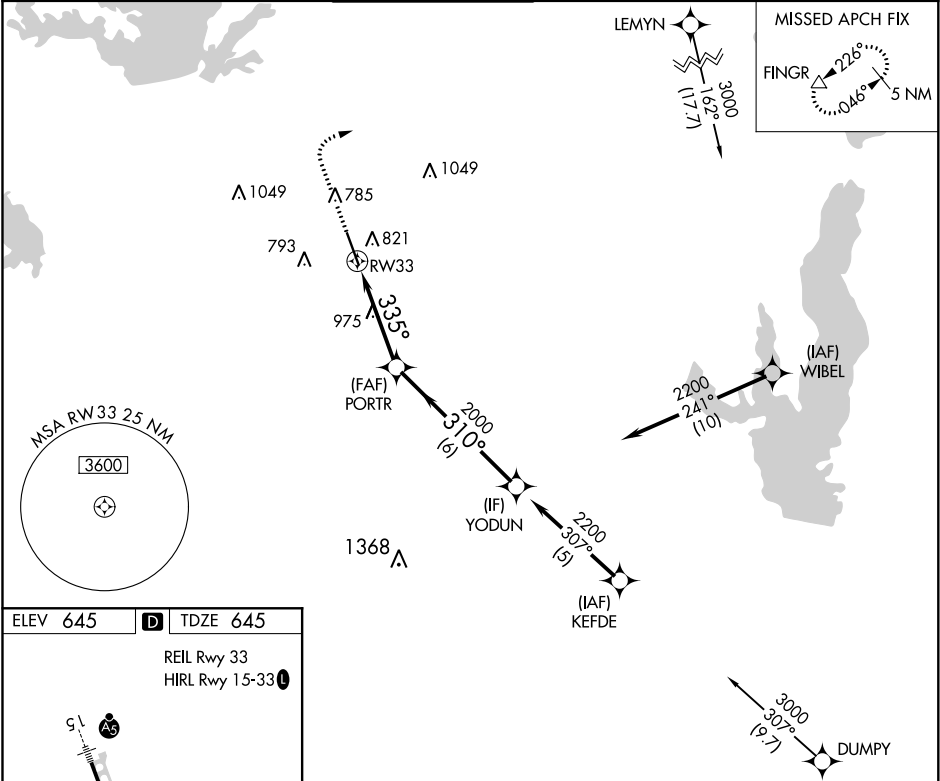
▼

▲

DME/DME RNP-0.3 NA. VDP NA with Dallas-Love Field altimeter setting. Helicopter visibility reduction below ¾ SM NA. When local altimeter setting not received, use Dallas-Love Field altimeter setting and increase all MDA 40 feet, increase LNAV Cat C/D visibility ½ mile, Circling Cat C visibility ¼ mile.

MISSED APPROACH: Climb to 1500 then climbing right turn to 5000 direct FINGR and hold.

ATIS 133.4	REGIONAL APP CON 124.3 282.275	ADDISON TOWER ★ 126.0 (CTAF) 239.0	GND CON 121.6	CLNC DEL 119.55	UNICOM 122.95
---------------	-----------------------------------	---------------------------------------	------------------	--------------------	------------------



ELEV 645

D

TDZE 645

REIL Rwy 33

HIRL Rwy 15-33

TWR 710

335° to RWY 33

1500

5000

FINGR

VGSI and RNAV glidepath not coincident (VGSI Angle 3.00/TCH 60)

YODUN

1.7 NM

1.7 NM to RWY 33

335°

2000

310°

2200

1.7 NM

2.4 NM

6 NM

CATEGORY	A	B	C	D
LNAV MDA	1240-1	595 (600-1)	1240-1¾	595 (600-1¾)
CIRCLING	1240-1	595 (600-1)	1280-1¾ 635 (700-1¾)	1400-2½ 755 (800-2½)