

LOC/DME I-RBD 110.75 Chan 44 (Y)	APP CRS 309°	Rwy Idg TDZE 660 Apt Elev 661
--	------------------------	---

ILS or LOC RWY 31

DALLAS EXECUTIVE (RBD)

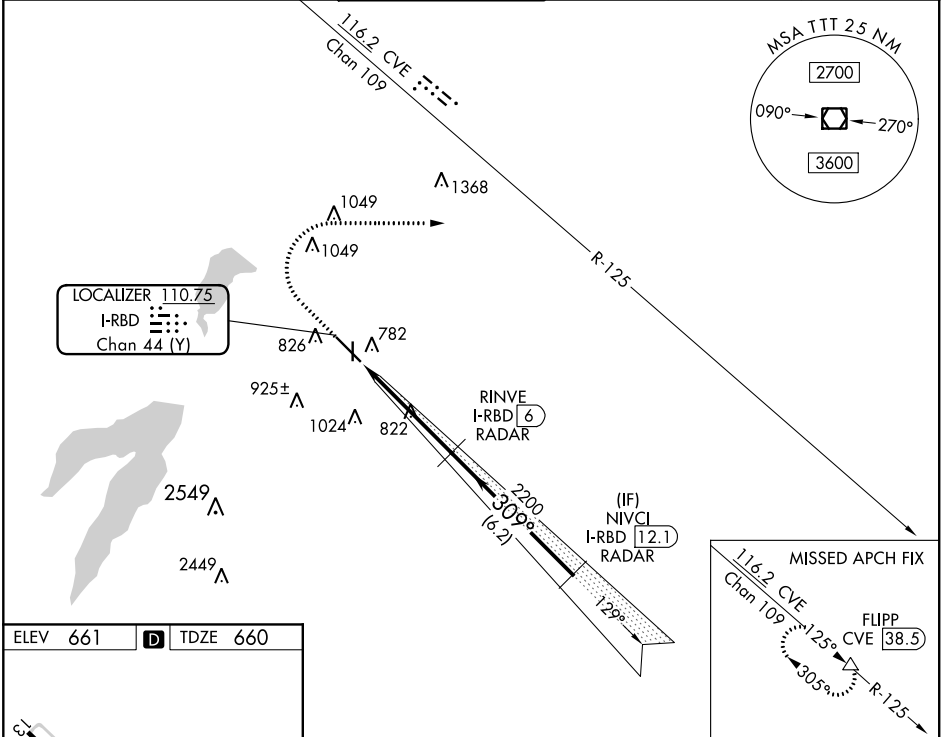
RADAR required for procedure entry.
DME or RADAR required for LOC only.

▼

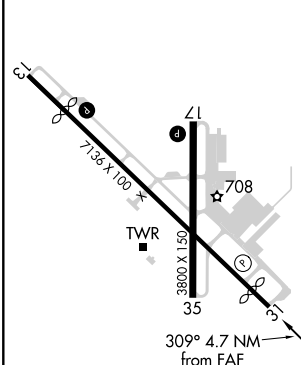
▲

MISSED APPROACH: Climb to 1200 then climbing right turn to 2500 on heading 090° and CVE
VOR/DME R-125 to FLIPP/CVE 38.5 DME and hold.

ATIS 126.35	REGIONAL APP CON 125.2 343.65	EXECUTIVE TOWER★ 127.25 (CTAF) 0	GND CON 119.475	CLNC DEL 118.625	UNICOM 122.95
-----------------------	---	---	---------------------------	----------------------------	-------------------------



ELEV 661	D	TDZE 660
----------	----------	----------



REIL Rwys 13, 17, 31 and 35
MIRL Rwys 13-31 and 17-35 **0**
FAF to MAP 4.7 NM

Knots	60	90	120	150	180
Min:Sec	4:42	3:08	2:21	1:53	1:34

1200	2500	CVE	FLIPP	RINVE I-RBD 6	NIVCI I-RBD 12.1
↑	hdg 090°	R-125	△	RADAR	RADAR
*LOC only.					
CATEGORY	A	B	C	D	
S-ILS 31	860-3/4 200 (200-3/4)				
S-LOC 31	1080-1 420 (500-1)		1080-1 1/8 420 (500-1 1/8)		
CIRCLING	1160-1 499 (500-1)	1220-1 559 (600-1)	1340-2 679 (700-2)	1400-2 1/4 739 (800-2 1/4)	

SC-2, 03 DEC 2020 to 31 DEC 2020

SC-2, 03 DEC 2020 to 31 DEC 2020