

TYLER, TEXAS

AL-622 (FAA)

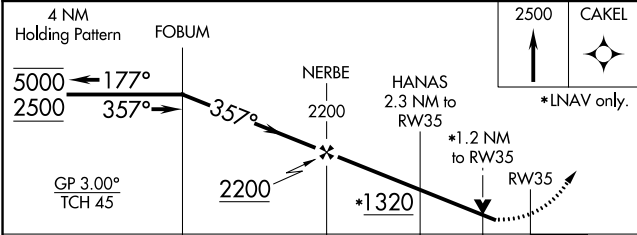
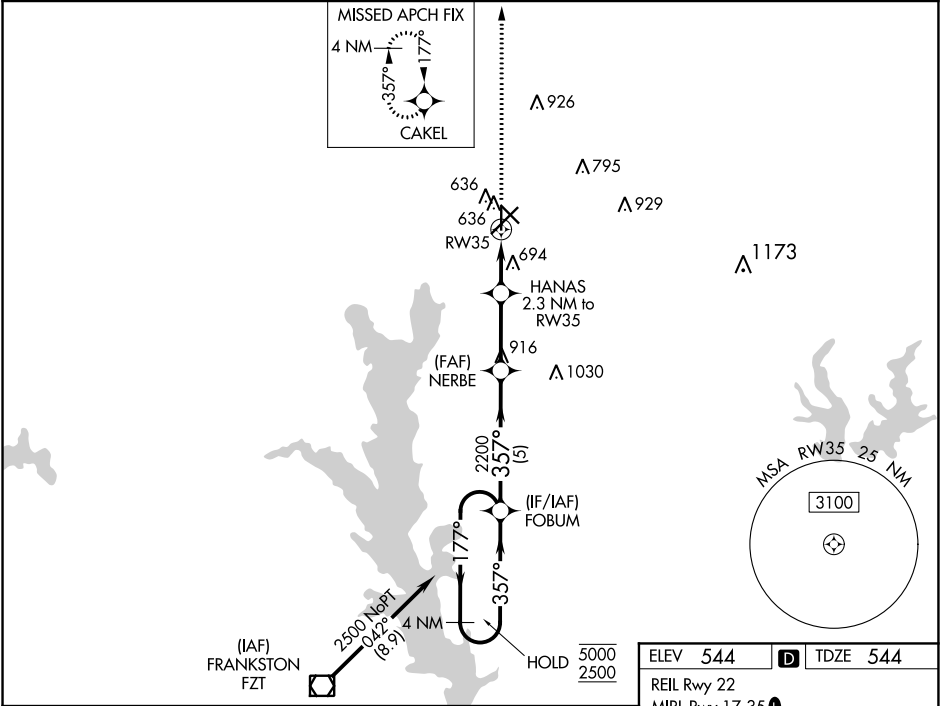
20310

WAAS CH 73037 W35A	APP CRS 357°	Rwy Idg TDZE 544 Apt Elev 544
----------------------------------------	------------------------	---------------------------------------------------

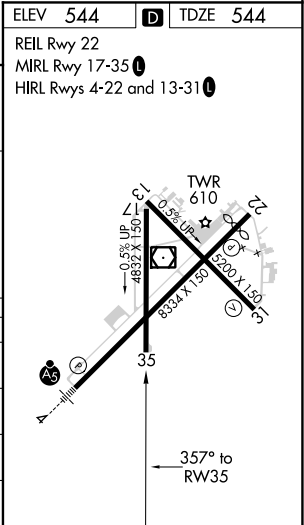
RNAV (GPS) RWY 35
TYLER POUNDS RGNL (TYR)

RNP APCH.	MISSED APPROACH: Climb to 2500 direct CAKEL and hold.
For uncompensated Baro-VNAV systems, LNAV/VNAV NA below -5°C or above 54°C. Rwy 35 helicopter visibility reduction below ¾ SM NA.	

ATIS 126.25	LONGVIEW APP CON ★ 128.75 379.15	POUNDS TOWER ★ 120.1 (CTAF) 0 257.8	GND CON 121.9	UNICOM 122.95
-----------------------	--------------------------------------------	-----------------------------------------------	-------------------------	-------------------------



CATEGORY	A	B	C	D
LPV DA	794-¾	250 (300-¾)		
LNAV/VNAV DA	799-¾	255 (300-¾)		
LNAV MDA	960-1	416 (500-1)	960-1½	416 (500-1½)
CIRCLING	980-1 436 (500-1)	1020-1 476 (500-1)	1160-1¾ 616 (700-1¾)	1280-2¼ 736 (800-2¼)



TYLER, TEXAS
Amdt 1 08NOV18

32°21'N-95°24'W

TYLER POUNDS RGNL (TYR)
RNAV (GPS) RWY 35

SC-2, 03 DEC 2020 to 31 DEC 2020

SC-2, 03 DEC 2020 to 31 DEC 2020