

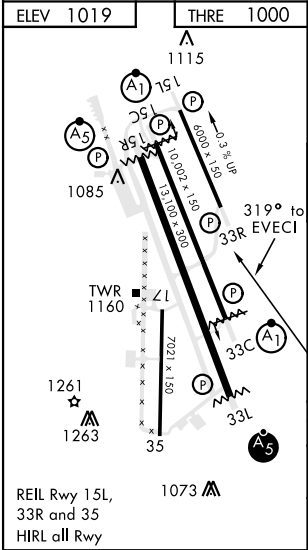
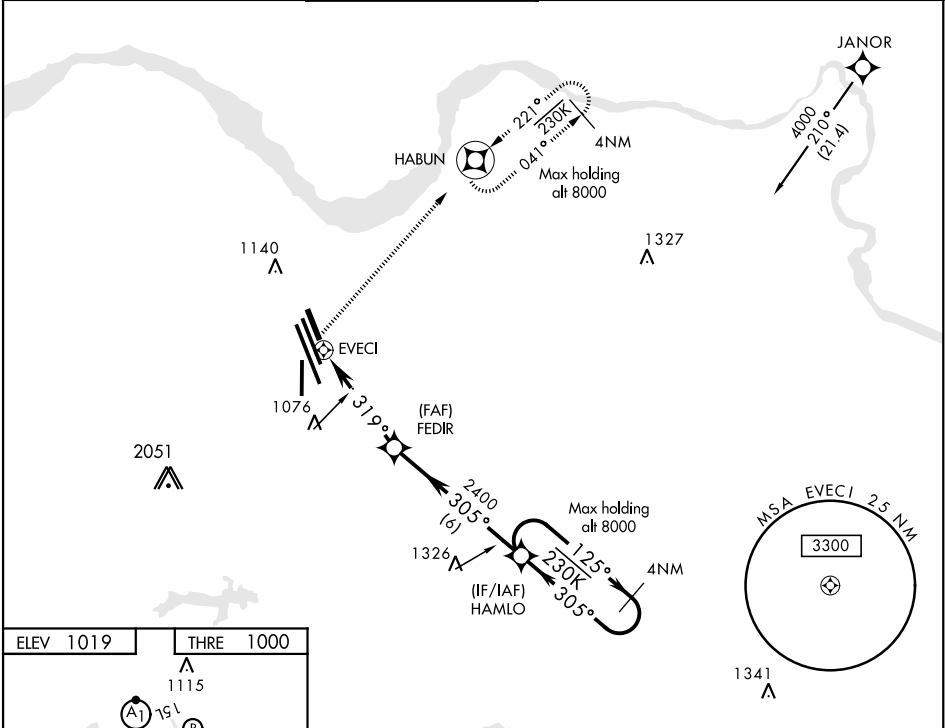
APCH CRS	Rwy ldg	6000
319°	THRE	1000
	Arpt Elev	1019

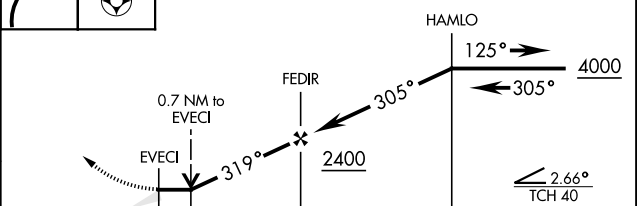
AL-454 [USAF]

RNAV (GPS) RWY 33R

SHEPPARD AFB/WICHITA FALLS MUNI (KSPS)

* Circling NA West of RWY 15R/33L. DME/DME RNP-0.3 NA.			MISSED APPROACH: Climbing right turn to 3000 direct HABUN and hold.		
ATIS ★	SHEPPARD APP CON	SHEPPARD TOWER ★	GND CON	CLNC DEL	ASR
132.05 269.9	118.2 269.025	119.75 279.525 (CTAF)	125.5 289.4	121.2 282.225	



EMERG SAFE ALT FROM "EVECI" 100 NM 4600					
<div>3000</div> <div>HABUN</div>		VGSI and descent angle not coincident			
<div></div>					
CATEGORY	A	B	C	D	E
LNAV MDA	1420-1 420 (500-1)		1420-1 1/8 420 (500-1 1/8)		NA
CIRCLING*	1440-1 421 (500-1)	1480-1 461 (500-1)	1480-1 1/2 461 (500-1 1/2)	2020-3 1001(1100-3)	NA

RNAV (GPS) RWY 33R

SC-2, 03 DEC 2020 to 31 DEC 2020

SC-2, 03 DEC 2020 to 31 DEC 2020