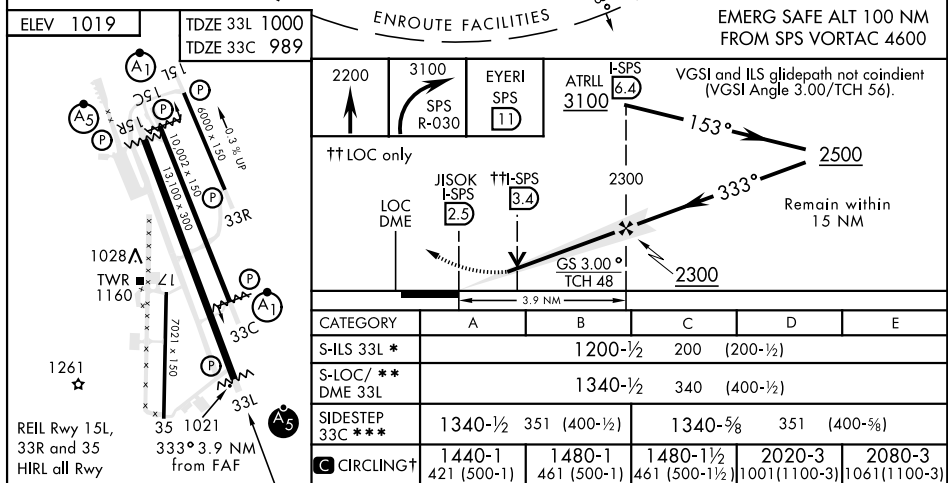
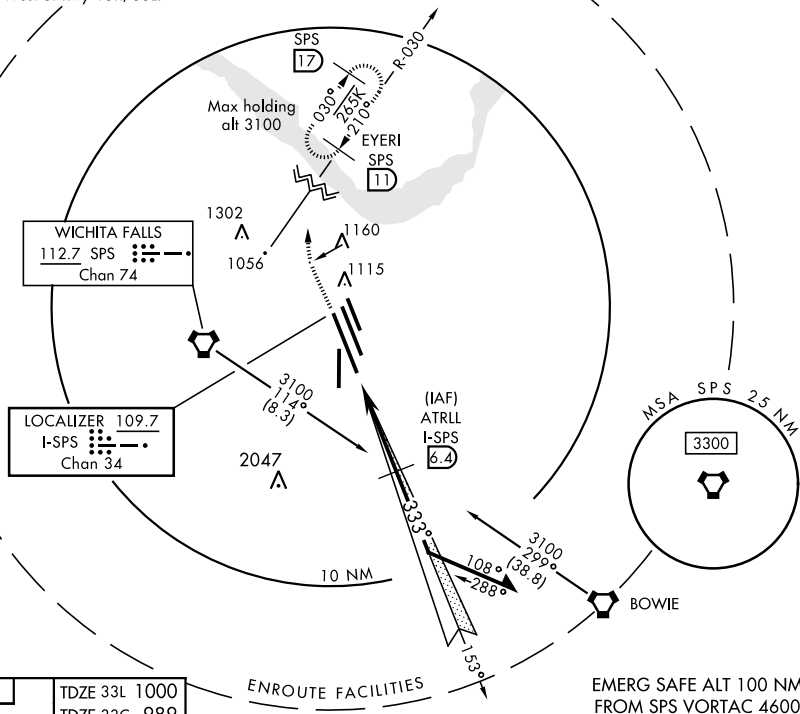


WICHITA FALLS, TEXAS

ILS or LOC/DME Y RWY 33L

LOC/DME I-SPS 109.7 Chan 34		APCH CRS 333°		Rwy Idg 33L 13,100 33C 10,002 TDZE 33L 1000 33C 989 Arpt Elev 1019		SHEPPARD AFB/ WICHITA FALLS MUNI (KSPS)	
AL-454 [USAF]							
<div> <div>▼</div> <div> * When ALS inop, increase vis to ¾ mile. ** When ALS inop, increase vis to 1 mile. *** When ALS inop, increase vis to 1 mile. </div> </div>				<div> <div>MAISR</div> <div> </div> </div>		<div> <div>ALSF-1</div> <div> </div> </div>	
MISSED APPROACH: Climb to 2200, then climbing right turn to 3100 via SPS VORTAC R-030 to EYERI (SPS R-030/11) and hold.							
ATIS ★ 132.05 269.9		SHEPPARD APP CON 118.2 269.025		SHEPPARD TOWER ★ 119.75 279.525 (CTAF)		GND CON 125.5 289.4	
						CLNC R-030/11 and hold. 121.2 282.225	
						ASR	

† Circling NA West of Rwy 15R/33L.



WICHITA FALLS, TEXAS 33°59'N-98°30'W

SHEPPARD AFB/WICHITA FALLS MUNI (KSPS)

Amdt 6 16JUL20

ILS or LOC/DME Y RWY 33L

SC-2, 03 DEC 2020 to 31 DEC 2020

SC-2, 03 DEC 2020 to 31 DEC 2020