
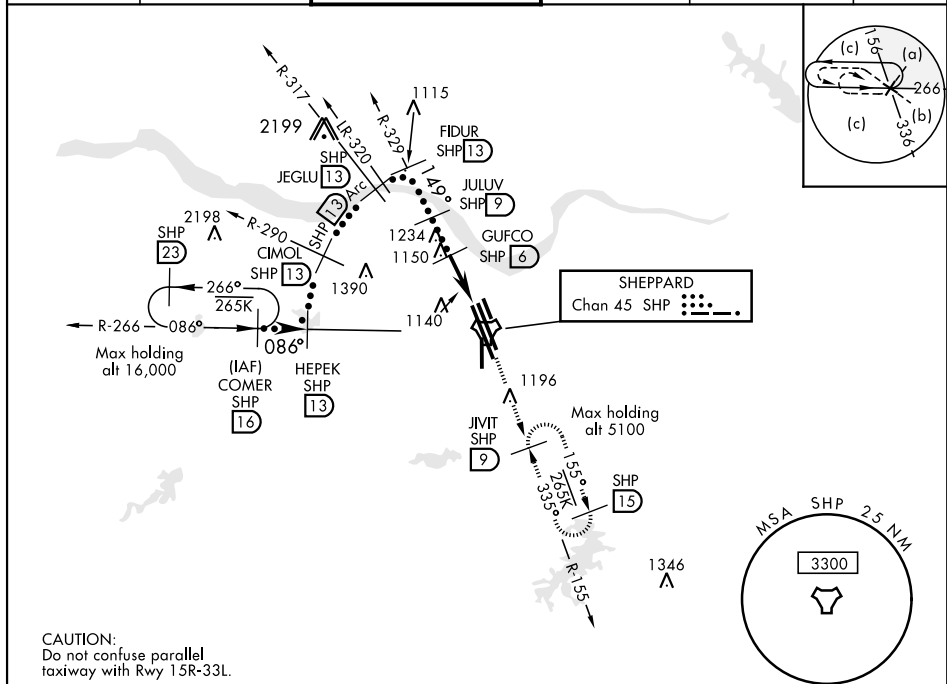


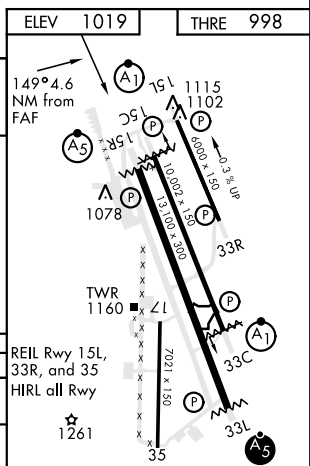
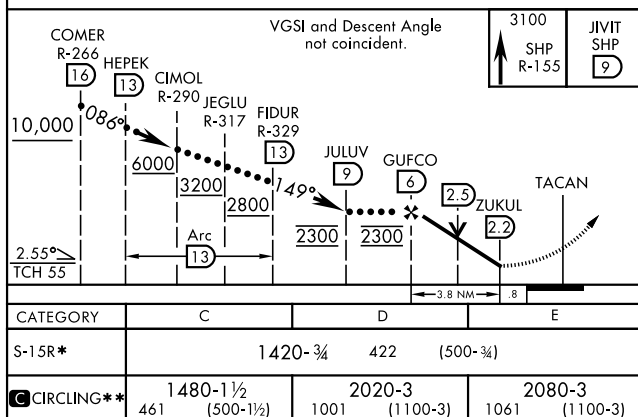
WICHITA FALLS, TEXAS

## HI-TACAN RWY 15R

TACAN SHP Chan <b>45</b>		APCH CRS <b>149°</b>		Rwy Idg <b>13,100</b> THRE <b>998</b> Arpt Elev <b>1019</b>		JAL-454 [USAF]		SHEPPARD AFB/WICHITA FALLS MUNI (KSPS)	
<b>V</b> * When ALS inop, increase CAT CDE vis to 1/4 miles. <b>**</b> Circling not authorized W of Rwy 15R-33L.						MALSR 		MISSED APPROACH: Climb and maintain 3100, intercept SHP TACAN R-155 to SHP R-155/9 DME (JIVIT) and hold.	
ATIS ★ <b>132.05 269.9</b>		SHEPPARD APP CON <b>118.2 269.025</b>		SHEPPARD TOWER ★ <b>119.75 0 279.525</b> (CTAF)		GND CON <b>125.5 289.4</b>		CLNC DEL <b>121.2 282.225</b>	
									ASR



EMERG SAFE ALT 100 NM 4600



WICHITA FALLS, TEXAS

33°59'N-98°30'W

SHEPPARD AFB/WICHITA FALLS MUNI (KSPS)

## HI-TACAN RWY 15R