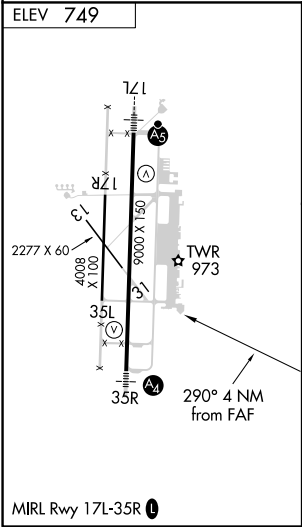
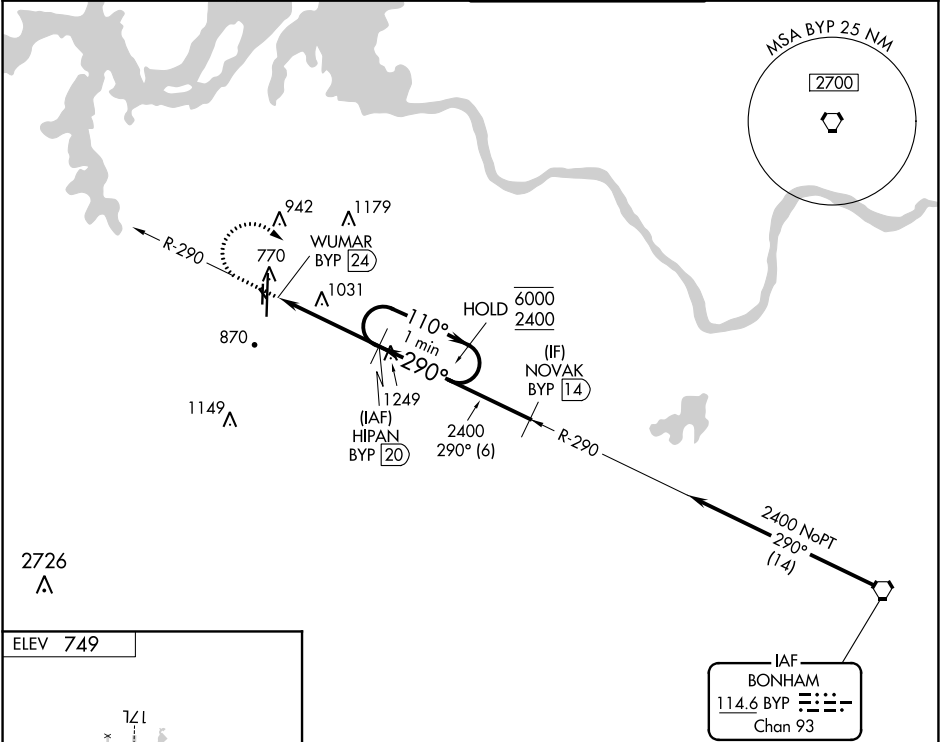


VORTAC BYP	APP CRS	Rwy Idg	N/A
114.6	290°	TDZE	N/A
Chan 93		Apt Elev	749

VOR-A

NORTH TEXAS RGNL/PERRIN FIELD (GYI)

DME required.		MISSED APPROACH: Climb to 2000 then climbing right turn to 2400 on BYP VORTAC R-290 to HIPAN/20 DME and hold.	
Circling Rwy 13, 17R, 31, 35L NA at night.			
ATIS	FORT WORTH CENTER	NORTH TEXAS TOWER ★	GND CON
118.775	124.75 323.0	120.575 (CTAF) 233.7	124.125



Procedure NA for arrival on BYP VORTAC airway radials 264 CW 305.			
2000	2400	BYP R-290	HIPAN BYP 20
One Minute Holding Pattern			
CATEGORY	A	B	C
CIRCLING	1340-1	591 (600-1)	1400-1¾ 651 (700-1¾)