

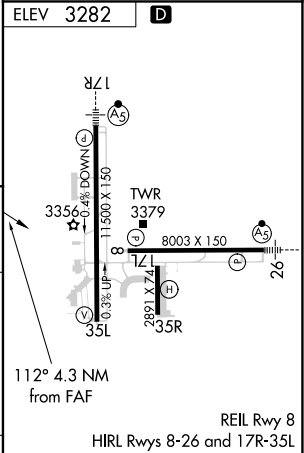
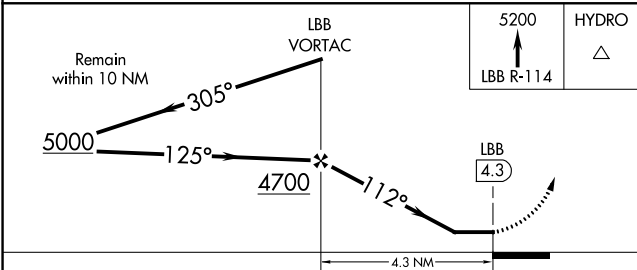
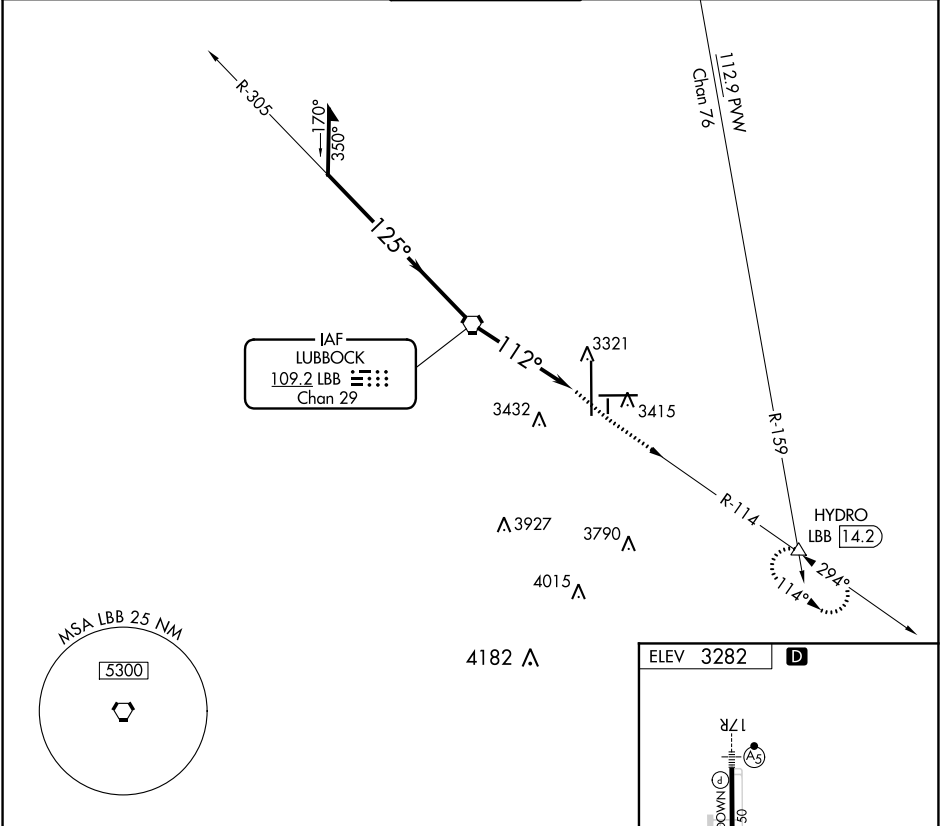
VORTAC LBB <b>109.2</b> Chan <b>29</b>	APP CRS <b>112°</b>	Rwy Idg TDZE Apt Elev <b>N/A</b> <b>N/A</b> <b>3282</b>
--	------------------------	--

VOR-A

LUBBOCK PRESTON SMITH INTL (LBB)

ATIS <b>125.3 270.275</b>		LUBBOCK APP CON <b>119.2 351.8</b>	LUBBOCK TOWER <b>120.5 239.3</b>	GND CON <b>121.9 348.6</b>	CLNC DEL <b>125.8 281.55</b>
------------------------------	--	---------------------------------------	-------------------------------------	-------------------------------	---------------------------------

MISSED APPROACH: Climb to 5200 via  
LBB R-114 to HYDRO INT and hold.



CATEGORY	A	B	C	D	FAF to MAP 4.3 NM					
CIRCLING	3720-1 438 (500-1)	3740-1 458 (500-1)	3880-1½ 598 (600-1½)	3940-2 658 (700-2)	Knots	60	90	120	150	180
					Min:Sec	4:18	2:52	2:09	1:43	1:26

VOR-A

SC-2, 03 DEC 2020 to 31 DEC 2020

SC-2, 03 DEC 2020 to 31 DEC 2020