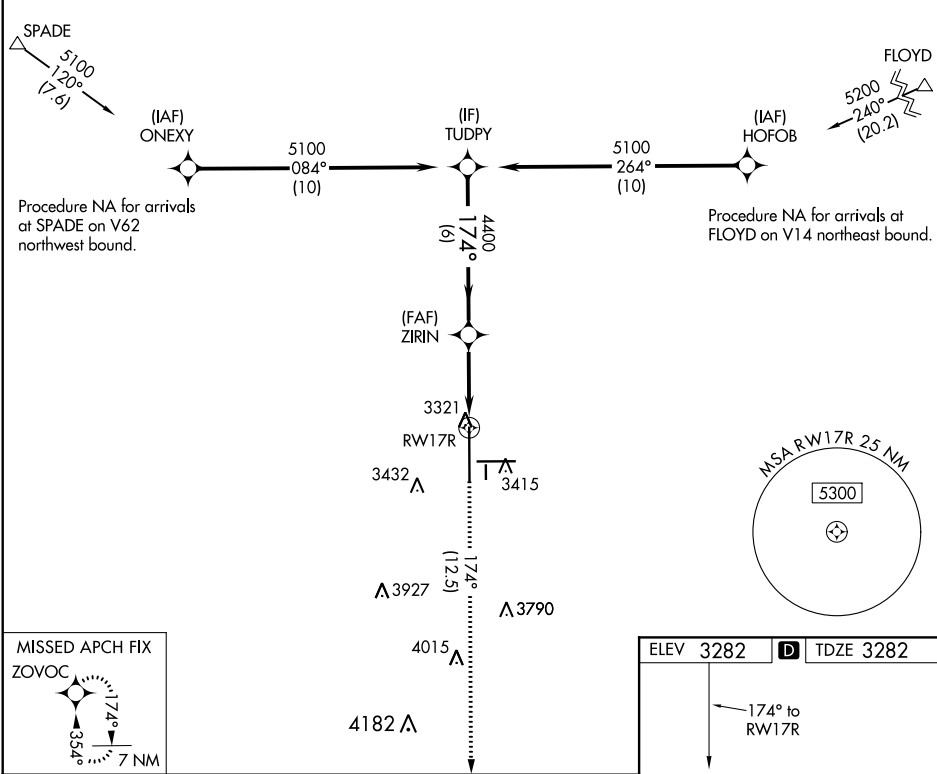


APP CRS	Rwy Idg	<b>11500</b>
<b>174°</b>	TDZE	<b>3282</b>
	Apt Elev	<b>3282</b>

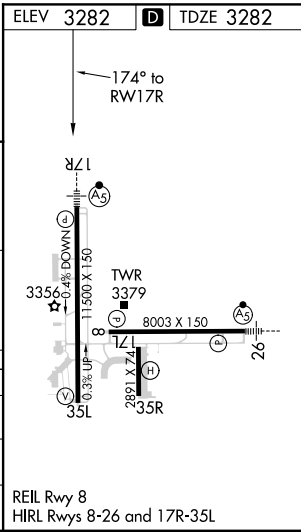
**RNAV (RNP) Z RWY 17R**  
LUBBOCK PRESTON SMITH INTL (LBB)

RNP APCH.	MALSR	MISSED APPROACH: Climb to 5400 on track 174° to ZOVOC and hold.
▼ For uncompensated Baro-VNAV systems, procedure NA below -12°C or above 51°C. For inop ALS, increase RNP 0.16 all Cats visibility to RVR 4500 and increase RNP 0.30 all Cats visibility to RVR 6000.		

ATIS	LUBBOCK APP CON	LUBBOCK TOWER	GND CON	CLNC DEL
<b>125.3 270.275</b>	<b>119.2 351.8</b>	<b>120.5 239.3</b>	<b>121.9 348.6</b>	<b>125.8 281.55</b>



TUDPY				
VGSI and RNAV glidepath not coincident (VGSI Angle 3.00/TCH 69°).				
5100				
174°				
GP 3.00° TCH 52				
4400				
ZIRIN				
4400				
RWY 17R				
6 NM				
3.3 NM				
CATEGORY	A	B	C	D
RNP 0.16 DA	3549/24 267 (300-½)			
RNP 0.30 DA	3639/40 357 (400-¾)			



**AUTHORIZATION REQUIRED**