

LUBBOCK, TEXAS

## HI-ILS or LOC RWY 17R

LOC I-LBB <b>111.7</b> Chan <b>54</b>	APCH CRS <b>174°</b>	Rwy Idg <b>11,500</b> TDZE <b>3282</b> Arpt Elev <b>3282</b>
---	-------------------------	--

JAL-241 [USAF]

LUBBOCK PRESTON SMITH INTL (KLBB)

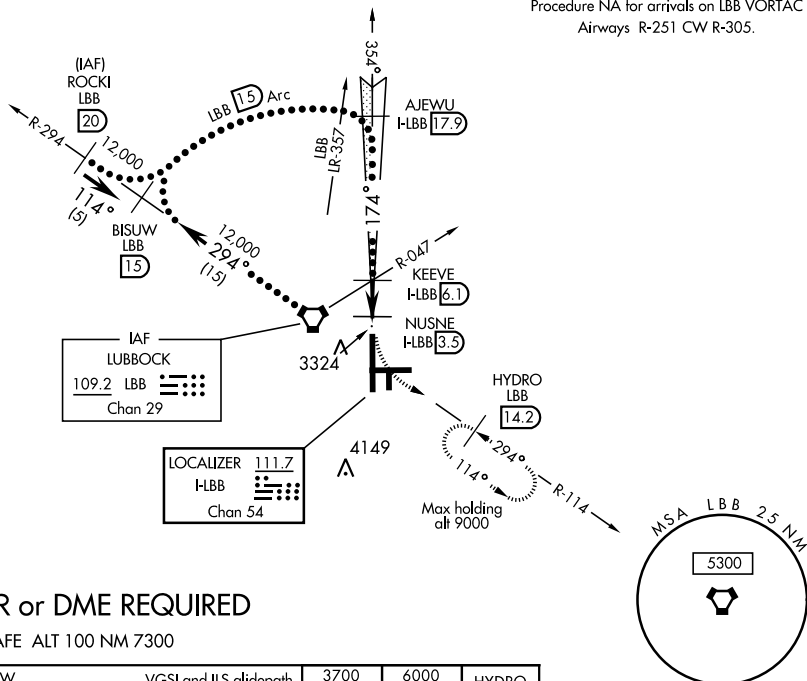
- V** \* When ALS inop, increase CAT E RVR to 40.  
**\*\*** When ALS inop, increase CAT CDE vis to 1 3/8 mile.  
**Δ** \*\*\* When ALS inop, increase CAT CDE RVR to 50.



**MISSED APPROACH:** Climb to 3700, then climbing left turn to 6000 via LBB VORTAC R-114 to HYDRO (LBB 14.2 DME) and hold, continue climb in hold to 6000.

ATIS <b>125.3 270.275</b>	LUBBOCK APP CON <b>119.2 351.8</b>	LUBBOCK TOWER <b>120.5 239.3</b>	GND CON <b>121.9 348.6</b>	CLNC DEL <b>125.8 281.55</b>
------------------------------	---------------------------------------	-------------------------------------	-------------------------------	---------------------------------

Procedure NA for arrivals on LBB VORTAC  
 Airways R-251 CW R-305.



## RADAR or DME REQUIRED

EMERG SAFE ALT 100 NM 7300

BISUW LBB (15) 12,000 AJEWU LBB (17.9) 6000 VGS and ILS glidepath not coincident (VGS angle 3.0/TCH69) KEEVE LBB R-047 H-LBB (6.1) 4600 NUSNE H-LBB (3.5) 3780 H-LBB (3) 3780 H-LBB (2.1) 3780 GS 3.00° TCH 53 LBB Arc (15) 2.6 NM 0.5 0.9				3700 6000 HYDRO LBB (14.2) ELEV 3282 TDZE 3282 174° 4 NM from FAF REIL Rwy 8 HIRL Rwy 8-26 and 17R-35L TWR 3379 8003 x 150 3321 A5 3356 V 3261 35R 3386 A5 3415 A5 33L FAF to MAP 4 NM Knots 120 140 160 180 200 Min:Sec 2:00 1:43 1:30 1:20 1:12
CATEGORY	C	D	E	
S-ILS 17R *	3482/24	200 (200-1/2)		
S-LOC 17R **	3780/50	498 (500-1)		
CIRCLING	3880-1 1/2 598 (600-1 1/2)	3940-2 658 (700-2)	4100-3 818 (900-3)	
NUSNE DME FIX MINIMUMS				
S-LOC 17R ***	3620/26	338 (400-3/4)		
CIRCLING	3880-1 1/2 598 (600-1 1/2)	3940-2 658 (700-2)	4100-3 818 (900-3)	

LUBBOCK, TEXAS

33°40'N-101°49'W

LUBBOCK PRESTON SMITH INTL (KLBB)

Amdt 2 02FEB17

## HI-ILS or LOC RWY 17R