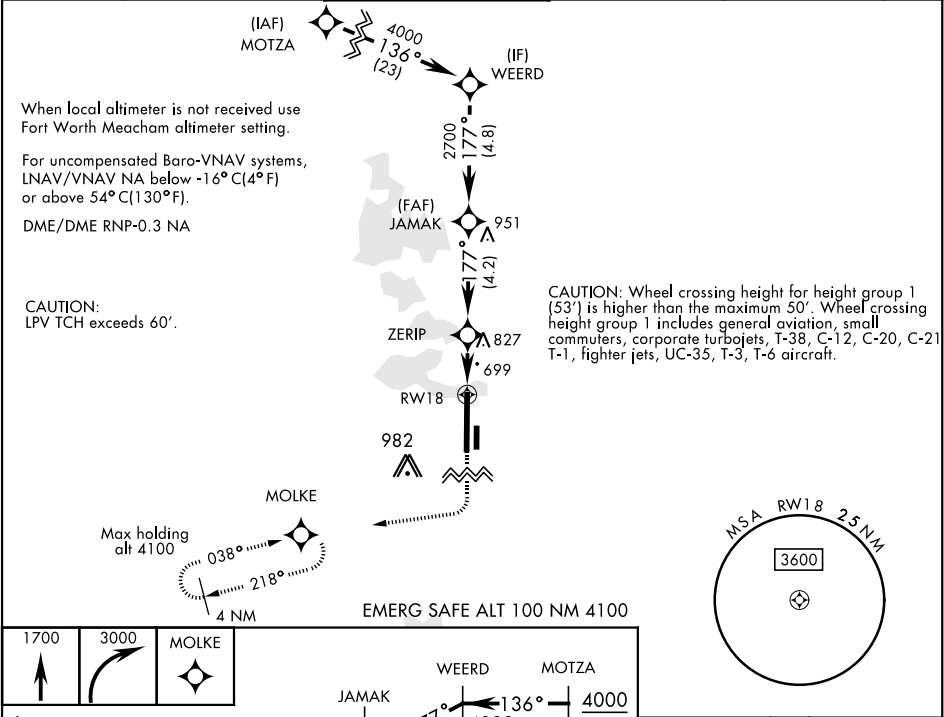



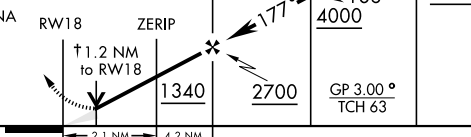




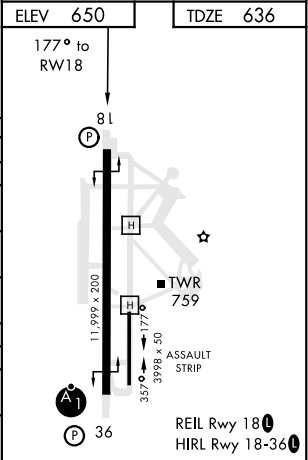
FORT WORTH, TEXAS

RNAV (GPS) RWY 18

WAAS CH 71215 W18A		APCH CRS 177°	Rwy Idg 11,999 TDZE 636 Arpt Elev 650	AL-160 [USN]	FORT WORTH NAS JRB (CARSWELL FLD) (KNFW)	
<div><div></div><div>* Circling not authorized E of Rwy 18-36. ** Baro VNAV NA when local altimeter not received.</div></div>				MISSED APPROACH: Climb to 1700, then climbing right turn to 3000 direct MOLKE and hold.		
ATIS★ 351.675	REGIONAL APP CON 125.8 257.95		NAVY FORT WORTH TOWER★ 120.950 269.325	GND CON 121.675 279.575	CLNC DEL 126.4 254.325	ASR/ PAR



1700	3000	MOLKE				
						
† LNAV only. VDP NA when using FTW altimeter setting.						
						
CATEGORY	A		B		C	D
LPV DA	836-3/4		200		(200-3/4)	
LNAV/VNAV DA **	1043-1 1/8		407		(400-1 1/8)	
LNAV MDA	1080-1	444 (500-1)	1080-1 3/8 444 (500-1 3/8)			
 CIRCLING *	1240-1 590 (600-1)	1280-1 630 (700-1)	1320-1 3/4 670 (700-1 3/4)	1320-2 670 (700-2)		
FORT WORTH MEACHAM ALTIMETER						
LPV DA	856-3/4		220		(300-3/4)	
LNAV MDA	1100-1	464 (500-1)	1100-1 1/8 464 (500-1 1/8)			
 CIRCLING *	1260-1 610 (700-1)	1300-1 650 (700-1)	1340-2 690 (700-2)	1340-2 1/4 690 (700-2 1/4)		



FORT WORTH, TEXAS 32°46'N-97°26'W FORT WORTH NAS JRB (CARSWELL FLD) (KNFW)

Amdt 1 18JUN20

RNAV (GPS) RWY 18

SC-2, 03 DEC 2020 to 31 DEC 2020

SC-2, 03 DEC 2020 to 31 DEC 2020