

LOC I-UXT 109.9 Chan 36	APP CRS 344°	Rwy Idg 7202 TDZE 680 Apt Elev 710
---	------------------------	---

ILS or LOC RWY 34

FORT WORTH MEACHAM INTL (FTW)

▼

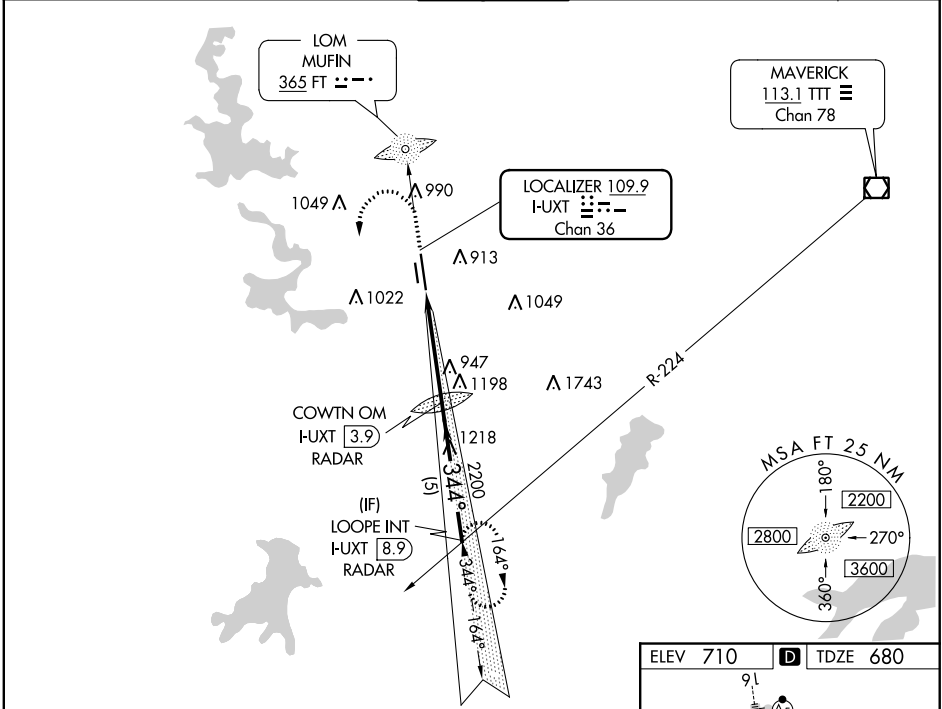
Inoperative table does not apply to S-LOC 34 Cat C.

MALS

MISSED APPROACH

: Climb to 1500, then climbing left turn to 2800 via I-UXT south course to LOOPE Int/ I-UXT 8.9 DME and hold.

ATIS 120.7	REGIONAL APP CON (North) 118.1 306.95 (South) 135.975 379.9	MEACHAM TOWER 118.3 257.8	GND CON 121.9	CLNC DEL 124.65
----------------------	---	-------------------------------------	-------------------------	---------------------------



RADAR REQUIRED

△ 1772

1500

2800

I-UXT south crs

LOOPE INT

COWTN OM I-UXT [3.9] RADAR

LOOPE INT I-UXT [8.9] RADAR

*LOC only.

GS 3.00°

TCH 60

CATEGORY	A	B	C	D
S- ILS 34	880-¾ 200 (200-¾)			
S-LOC 34	1200-¾ 520 (500-¾)	1200-1½ 520 (500-1½)	1200-1¾ 520 (500-1¾)	
CIRCLING	1260-1 550 (600-1)	1280-1 570 (600-1)	1340-1¾ 630 (700-1¾)	1500-2½ 790 (800-2½)

