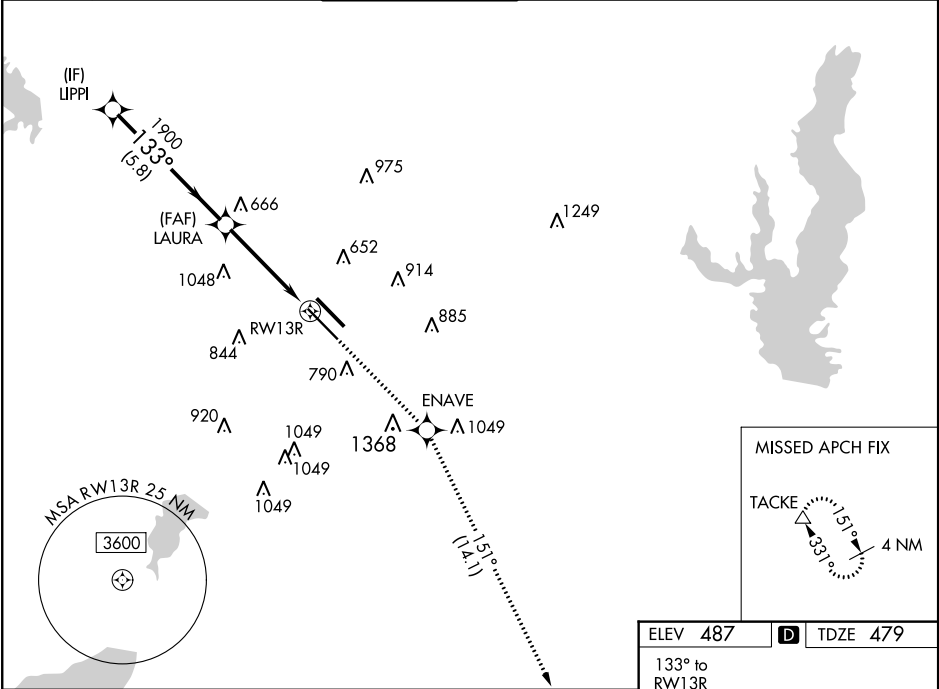


WAAS CH <b>82436</b> <b>W13A</b>	APP CRS <b>133°</b>	Rwy Idg TDZE <b>479</b> Apt Elev <b>487</b>
--	------------------------	---

RNAV (GPS) Z RWY 13R  
DALLAS LOVE FIELD (DAL)

RNP APCH.	Simultaneous approach authorized. Use of FD or AP providing RNAV track guidance required during simultaneous operations. LNAV procedure NA during simultaneous operations. For uncompensated Baro-VNAV systems, LNAV/VNAV NA below -6°C or above 54°C.	MISSED APPROACH: Climb to 3000 direct ENAVE and on track 151° to TACKE and hold.
-----------	--	---

D-ATIS <b>120.15</b>	REGIONAL APP CON NORTH <b>124.3 282.275</b> SOUTH <b>125.2 343.65</b>	LOVE TOWER <b>123.7 239.3</b>	GND CON <b>121.75 348.6</b>	CLNC DEL <b>127.9</b>	CPDLC
-------------------------	---	----------------------------------	--------------------------------	--------------------------	-------



VGSI and RNAV glidepath not coincident (VGSI Angle 3.00/TCH 52).				
LIPPI	LAURA	3000	ENAVE	TACKE
2500	1900	↑	fr 151°	△
GP 3.00° TCH 47		*1.4 NM to RW13R		*LNAV only.
5.8 NM	2.9 NM	1.4		
CATEGORY	A	B	C	D
LPV DA	679/40		200 (200-¾)	
LNAV/VNAV DA	834/60		355 (400-1¼)	
LNAV MDA	980/55	501 (500-1)	980-1¾	501 (500-1¾)
CIRCLING	1080-1 593 (600-1)	1140-1 653 (700-1)	1220-2 733 (800-2)	1520-3 1033 (1100-3)
TDZ/CL Rwy 13L and 31L HIRL Rwy 13L-31R and 13R-31L				