
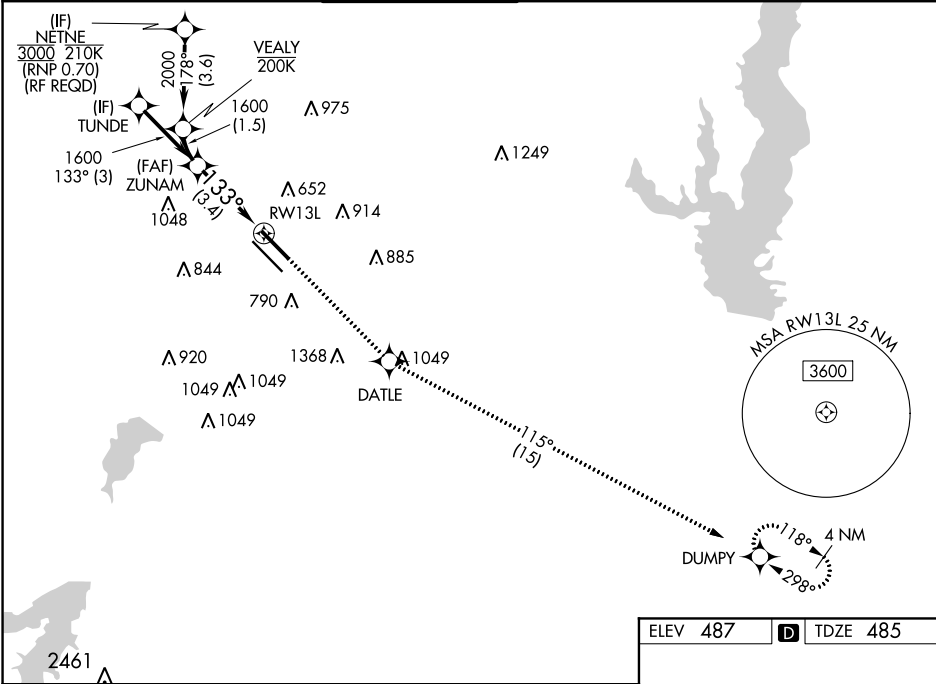


APP CRS	Rwy Idg	7352
133°	TDZE	485
	Apt Elev	487

RNAV (RNP) X RWY 13L

DALLAS LOVE FIELD (DAL)

RNP AR APCH.				<div>MALSR</div> <div></div>	MISSED APPROACH: Climb to 3000 direct DATLE and on track 115° to DUMPY and hold.	
<div>T</div>	Simultaneous approach authorized. For uncompensated Baro-VNAV systems, procedure NA below -6°C or above 54°C. For inop ALS, increase RNP 0.11 all Cats visibility to RVR 4500.					
D-ATIS 120.15	REGIONAL APP CON NORTH 124.3 282.275 SOUTH 125.2 343.65	LOVE TOWER 123.7 239.3	GND CON 121.75 348.6	CLNC DEL 127.9	CPDLC	



ELEV 487		D TDZE 485	
ZUNAM		See planview for multiple IF locations.	
1600		RW13L	
GP 3.00°		3.4 NM	
TCH 40			
CATEGORY	A	B	C
RNP 0.11 DA	754/24	269 (300-½)	
RNP 0.30 DA	846/40	361 (400-¾)	
AUTHORIZATION REQUIRED			

