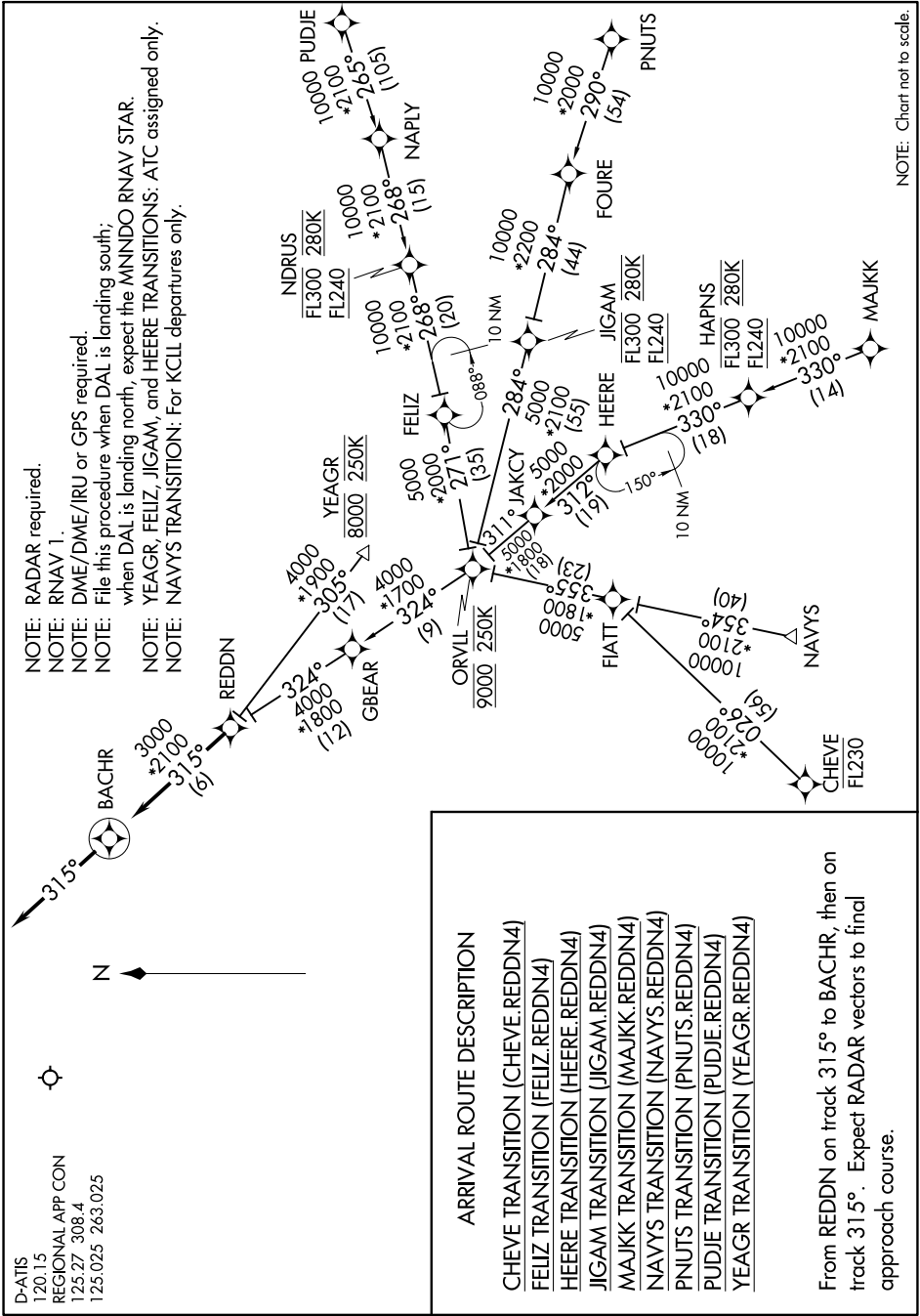


SC-2, 03 DEC 2020 to 31 DEC 2020



D-ATIS
120.15
REGIONAL APP CON
125.27 308.4
125.025 263.025

- NOTE: RADAR required.
- NOTE: RNAV 1.
- NOTE: DME/DME/IRU or GPS required.
- NOTE: File this procedure when DAL is landing south; when DAL is landing north, expect the MNDO RNAV STAR.
- NOTE: YEAGR, FELIZ, JIGAM, and HEERE departures only.
- NOTE: NAVYS TRANSITION: For KCLL departures only.

NOTE: Chart not to scale.

SC-2, 03 DEC 2020 to 31 DEC 2020