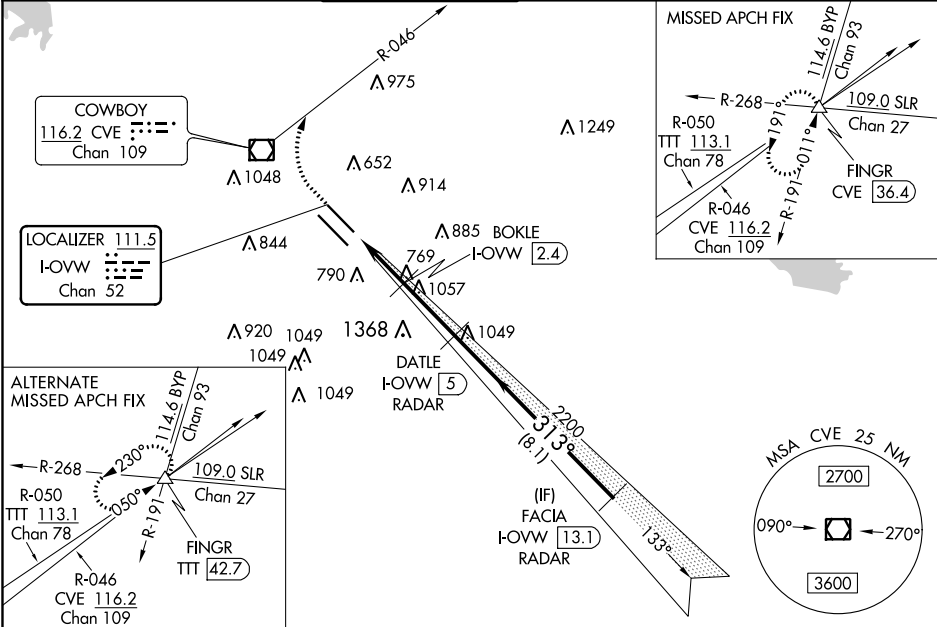


| | | | |
|----------------|-------------|----------|------------|
| LOC/DME I-OVW | APP CRS | Rwy Idg | 6952 |
| 111.5 | 313° | TDZE | 487 |
| Chan 52 | | Apt Elev | 487 |

ILS or LOC RWY 31R
DALLAS LOVE FIELD (DAL)

| | | |
|--|-------|---|
| DME or RADAR required for LOC only. RADAR required for procedure entry. | MALSR | MISSED APPROACH: Climb to 1000 then climbing right turn to 5000 on heading 330° and CVE VOR/DME R-046 to FINGR INT/CVE 36.4 DME and hold. |
| Simultaneous approach authorized. | AS | |
| ** RVR 1800 authorized with use of FD or AP or HUD to DA. | | |

| | | | | | |
|---------------|---|--------------------|---------------------|--------------|-------|
| D-ATIS | REGIONAL APP CON | LOVE TOWER | GND CON | CLNC DEL | CPDLC |
| 120.15 | NORTH 124.3 282.275 SOUTH 125.2 343.65 | 123.7 239.3 | 121.75 348.6 | 127.9 | |



| | | | | | | |
|-----------------|----------|-----------------|---|----------|---|-------|
| ELEV 487 | D | TDZE 487 | 1000 | 5000 | CVE R-046 | FINGR |
| | | | ↑ | hdg 330° | | △ |
| | | | *LOC only. | | | |
| | | | *I-OVW 0.2, I-OVW 1.3, BOKLE I-OVW 2.4, DATLE I-OVW 5, FINGR I-OVW 13.1 | | | |
| | | | 1360*, 2200, 2500 | | | |
| | | | GS 3.00° TCH 55 | | | |
| | | | 1.5 NM, 1.1 NM, 2.6 NM, 8.1 NM | | | |
| | | | CATEGORY A B C D | | | |
| | | | S-ILS 31R ** 687/24 200 (200-½) | | | |
| | | | S-LOC 31R 1360/24 873 (900-½) | | 1360-2 873 (900-2) | |
| | | | CIRCLING 1360-1¼ 873 (900-1¼) | | 1360-2½ 873 (900-2½) 1520-3 1033 (1100-3) | |
| | | | BOKLE FIX MINIMUMS (DME REQUIRED) | | | |
| | | | S-LOC 31R 1020/24 533 (600-½) | | 1020/55 533 (600-1) | |
| | | | CIRCLING 1020-1 533 (600-1) 1140-1 653 (700-1) | | 1220-2 733 (800-2) 1520-3 1033 (1100-3) | |

SC-2, 03 DEC 2020 to 31 DEC 2020

SC-2, 03 DEC 2020 to 31 DEC 2020