

LOC/DME I-LVF	APP CRS	Rwy Idg	8000
<b>111.1</b>	<b>313°</b>	TDZE	<b>477</b>
Chan 48		Apt Elev	<b>487</b>

ILS or LOC RWY 31L  
DALLAS LOVE FIELD (DAL)

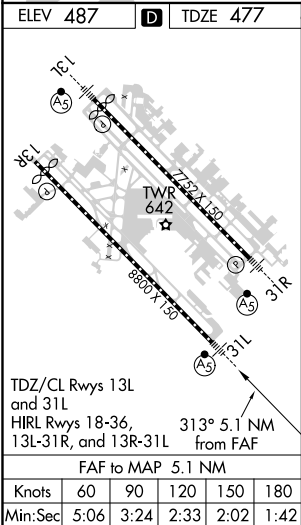
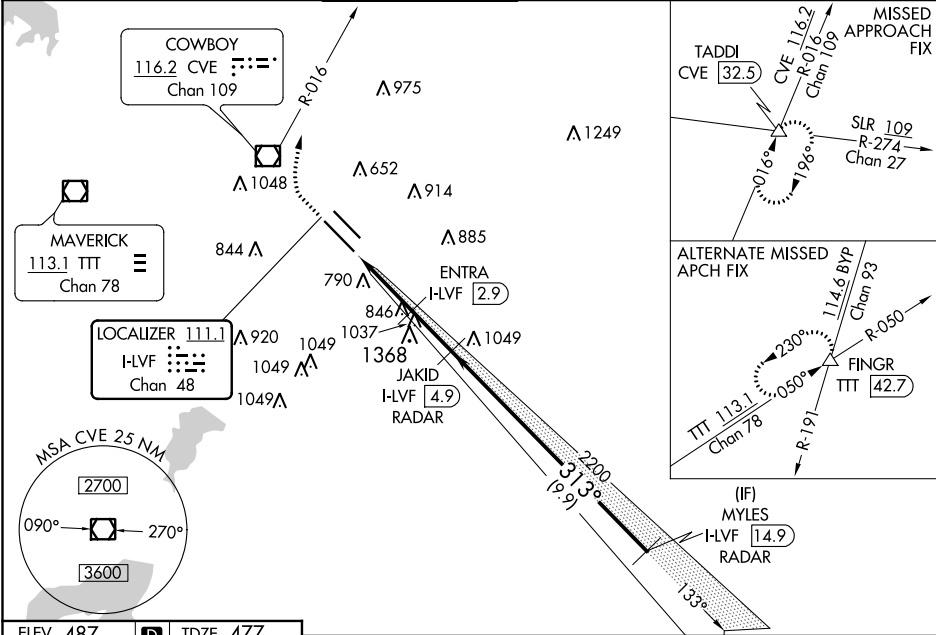
DME or RADAR required for LOC only.  
RADAR required for procedure entry.

Simultaneous approach authorized.

MALSR

MISSED APPROACH: Climb to 4000 direct CVE VOR/DME and on CVE R-016 to TADDI INT/ CVE 32.5 DME and hold.

D-ATIS	REGIONAL APP CON	LOVE TOWER	GND CON	CLNC DEL	CPDLC
<b>120.15</b>	NORTH <b>124.3 282.275</b> SOUTH <b>125.2 343.65</b>	<b>123.7 239.3</b>	<b>121.75 348.6</b>	<b>127.9</b>	



4000	CVE	TADDI	JAKID	MYLES
↑	☐	△	I-LVF [4.9] RADAR	I-LVF [14.9] RADAR
*LOC only.				
	*I-LVF [1.8]	ENTRA I-LVF [2.9]		
			2200	2500
				313°
				GS 3.08° TCH 55
	1.9 NM	1.1 NM	2.1 NM	9.9 NM
CATEGORY	A	B	C	D
S-ILS 31L		677/18	200 (200-½)	
S-LOC 31L	1520/40 1043 (1100-¾)	1520/55 1043 (1100-1)	1520-2½	1043 (1100-2½)
CIRCLING	1520-1¼ 1033 (1100-1¼)	1520-1½ 1033 (1100-1½)	1520-3	1033 (1100-3)
ENTRA FIX MINIMUMS (DME REQUIRED)				
S-LOC 31L	1160/24	683 (700-½)	1160-1½	683 (700-1½)
CIRCLING	1160-1	673 (700-1)	1220-2 733 (800-2)	1520-3 1033 (1100-3)

SC-2, 03 DEC 2020 to 31 DEC 2020

SC-2, 03 DEC 2020 to 31 DEC 2020