

|   |                        |   |
|---|------------------------|---|
| VORTAC BGS<br><b>117.2</b><br>Chan <b>119</b> | APP CRS<br><b>180°</b> | Rwy Idg <b>8802</b><br>TDZE <b>2562</b><br>Apt Elev <b>2573</b> |
|---|------------------------|---|

VOR/DME RWY 17

### BIG SPRING McMAHON-WRINKLE (BPG)

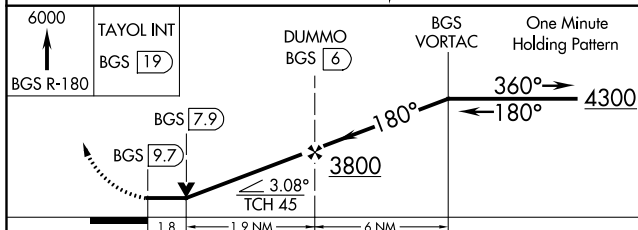
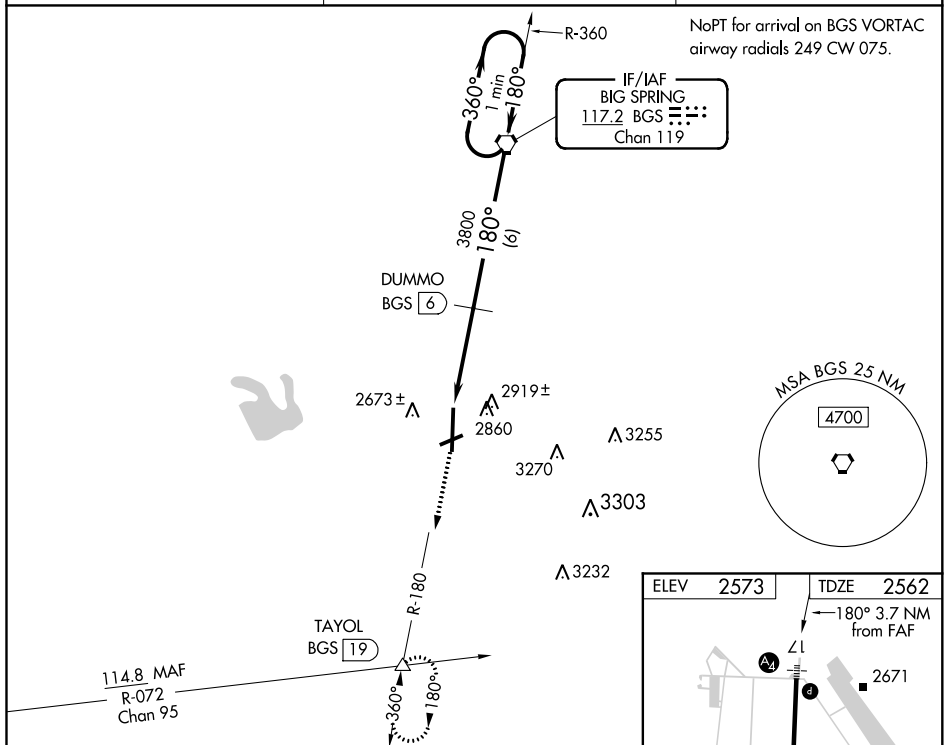
- T** When VGSi inoperative, circling Rwy 6 NA at night. Circling NA east of Rwy 17-35. Inoperative table does not apply to S-17 Cat C, when using Midland Intl Air and Space Port altimeter setting inoperative table does not apply to S-17 Cat B. VDP NA when using Midland Intl Air and Space Port altimeter setting. When local altimeter setting not received, use Midland Intl Air and Space Port altimeter setting and increase all MDA 140 feet, increase S-17 Cats B, C, and D and Circling Cats C and D visibility  $\frac{1}{2}$  mile. Circling Cat B visibility  $\frac{1}{4}$  mile.

SSALS

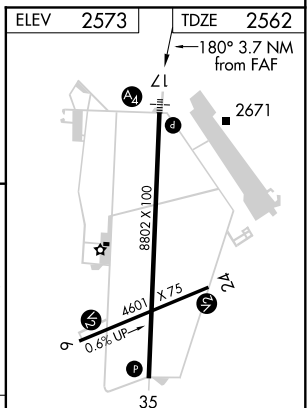


**MISSED APPROACH:** Climb to 6000 via BGS VORTAC R-180 to TAYOL INT/BGS 19 DME and hold, continue climb-in-hold to 6000.

|                          |   |  |
|--------------------------|---|--|
| AWOS-3<br><b>118.025</b> | FORT WORTH CENTER<br><b>133.7 350.2</b> | UNICOM<br><b>122.8</b> (CTAF) <b>1</b> |
|--------------------------|---|--|



| CATEGORY          | A   | B | C  | D                     |
|-------------------|---|---|--|-----------------------|
| S-17              | 3180- $\frac{3}{4}$ 618 (700- $\frac{3}{4}$ ) |   | 3180- $1\frac{3}{4}$<br>618 (700- $1\frac{3}{4}$ ) | 3180-2<br>618 (700-1) |
| <b>C</b> CIRCLING | 3180-1 607 (700-1)                            |   | 3180- $1\frac{3}{4}$<br>607 (700- $1\frac{3}{4}$ ) | 3180-2<br>607 (700-2) |

MIRL Rwy 6-24 and 17-35 **L**

VOR/DME RWY 17