



RNAV (GPS) Y RWY 4

RICK HUSBAND AMARILLO INTL (AMA)

 ASR	<p>For uncompensated Baro-VNAV systems, LNAV/VNAV NA below -22°C or above 41°C. For inop ALS, increase LPV Cat E visibility to RVR 4000, and LNAV/VNAV and LNAV Cat E to 1¼ SM.</p> <p>** RVR 1800 authorized with use of FD or AP or HUD to DA.</p>	 MALSR	<p>MISSED APPROACH: Climb to 5400 direct CIPL and on track 053° to ZUKTA and hold.</p>
---	---	---	---

MALSR

MISSED APPROACH: Climb to 5400
direct CIPLI and on track 053° to
ZUKTA and hold.

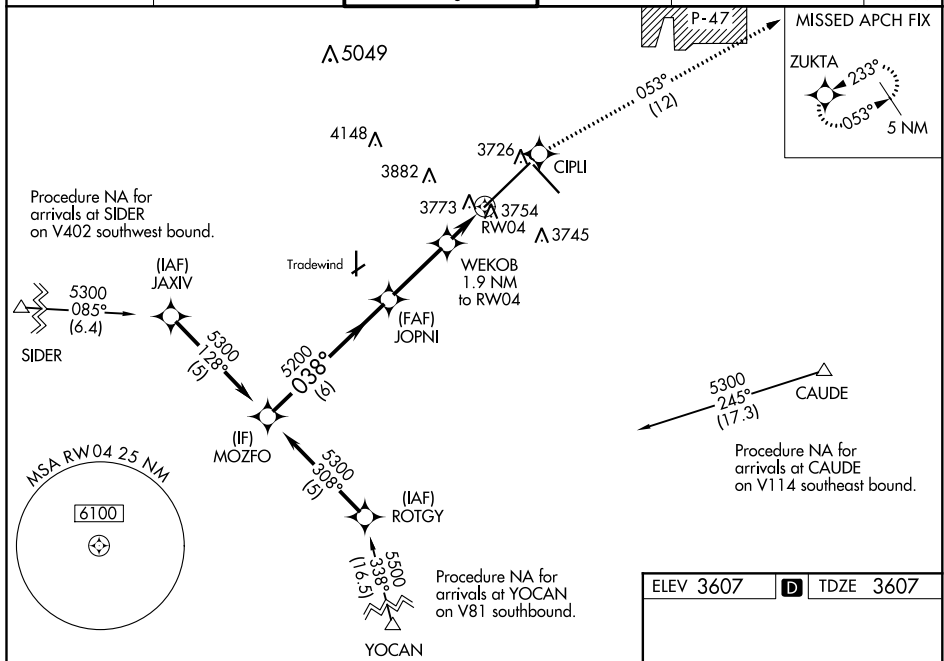


Figure 1: Example of a 2D chart showing a flight path. The path starts at 5300, descends to 5200, and then descends to 4240. Key points include MOZFO, JOPNI, WEKOB, and RW04. Distances are marked in NM (6, 2.9, 0.8, 1.1). Altitudes are marked in feet (5300, 5200, 4240). A GP 3.00° TCH 44 is indicated. A note states '*LNAV only.'

CATEGORY	A	B	C	D	E
LPV DA **	3807/24 200 (200-½)				
LNAV/ VNAV DA	4028/50 421 (500-1)				
LNAV MDA	4040/24 433 (500-½)	4040/40 433 (500-¾)	4040/50 433 (500-1)		
C CIRCLING	4080-1 473 (500-1)	4240-1¼ 633 (700-1¾)	4280-2¼ 673 (700-2¼)	4460-3 853 (900-3)	

