

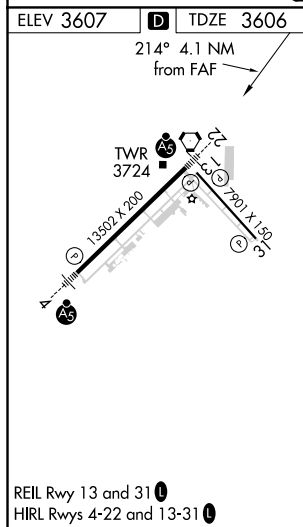
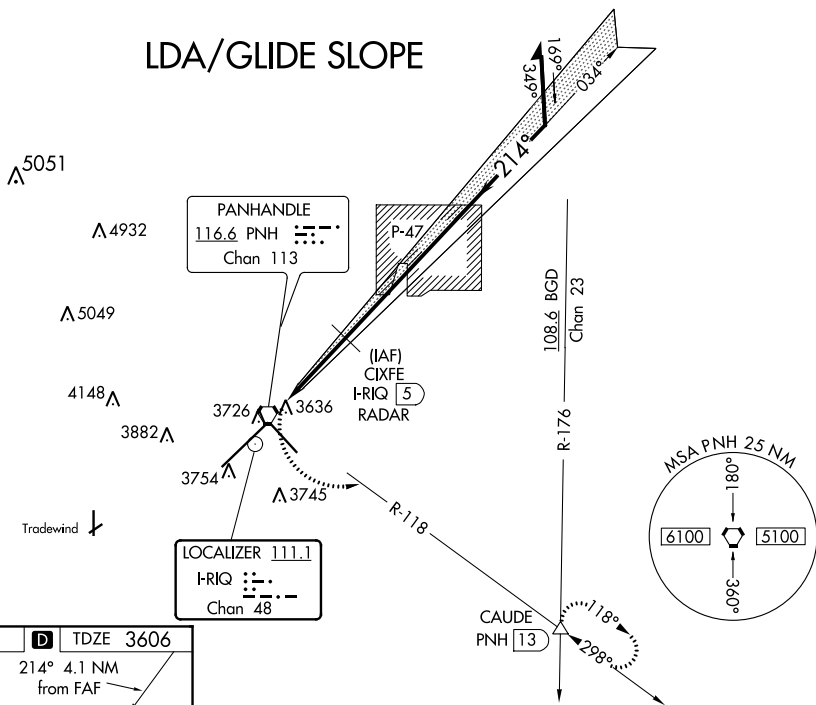
LDA/DME RWY 22
RICK HUSBAND AMARILLO INTL (AMA)

MALSR



MISSED APPROACH: Climbing left turn to 5000 via PNH VORTAC R-118 to CAUDE INT and hold.

ATIS 118.85 350.3	AMARILLO APP CON★ 119.5 307.0	AMARILLO TOWER★ 118.3(CTAF) 0 257.9	GND CON 121.9 348.6	CLNC DEL 121.65 239.275	UNICOM 122.95
----------------------	----------------------------------	--	------------------------	----------------------------	------------------



CATEGORY	A	B	C	D	E
LDA/GS-22	3856-1/2 250 (300-1/2)				
LDA-22	3900-1/2 294 (300-1/2)		3900-3/4 294 (300-3/4)		
C CIRCLING	4080-1 473 (500-1)	4240-13/4 633 (700-13/4)	4280-21/4 673 (700-21/4)	4460-3 853 (900-3)	