

JAL-19 [USAF]

VORTAC PNH
116.6
Chan **113**

APCH CRS
115°

Rwy Idg	7901
TDZE	3603
Arpt Elev	3607

When local altimeter setting not received,
use Borger altimeter setting.

MISSED APPROACH: Climbing right turn to 5300 on PNH VORTAC R-176 to JLPY/11 DME and hold.

ATIS
118.85 350.3

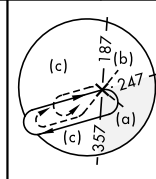
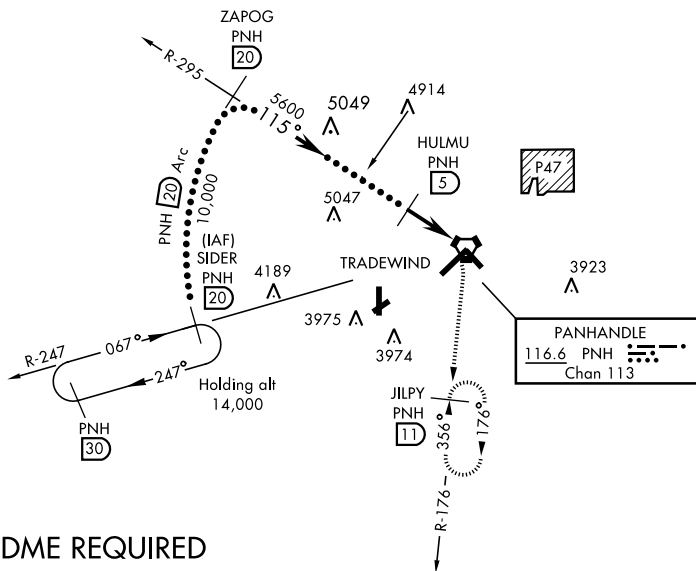
AMARILLO APP CON
119.5 307.0

AMARILLO TOWER★
118.3 257.9

GND CON
121.9 348.6

CLNC DEL
121.65 239.275

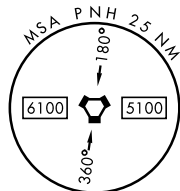
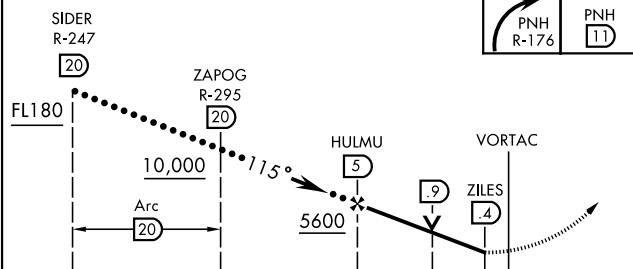
ASR



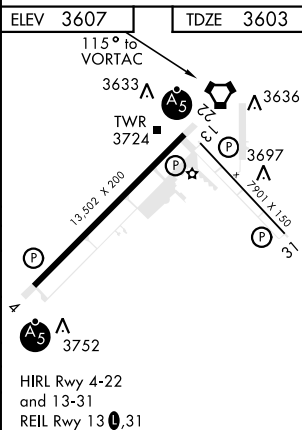
DME REQUIRED

EMERG SAFE ALT 100 NM 7500

VGS1 and descent angles not coincident.



CATEGORY	C	D	E
S-13	4040-1 ¼	437	(500-1¼)
C CIRCLING	4240-1¾ 633 (700-1¾)	4280-2¼ 673 (700-2¼)	4460-3 853 (900-3)
BORGER ALTIMETER SETTING			
S-13	4200-1¼	597	(600-1¼)
C CIRCLING	4400-2 ¼ 793 (900-2¼)	4440-2¾ 833 (900-2¾)	4620-3 1013 (1100-3)



AMARILLO, TEXAS

35°13'N-101°42'W

RICK HUSBAND AMARILLO INTL (KAMA)

HI-VOR or TACAN RWY 13