

WAAS CH 58209 W02A	APP CRS 019°	Rwy Idg TDZE 390 Apt Elev 390	5002
----------------------------------------	------------------------	---------------------------------------------------	-------------

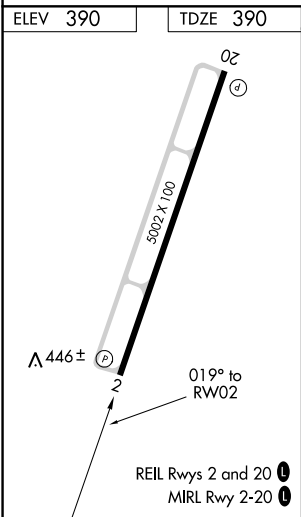
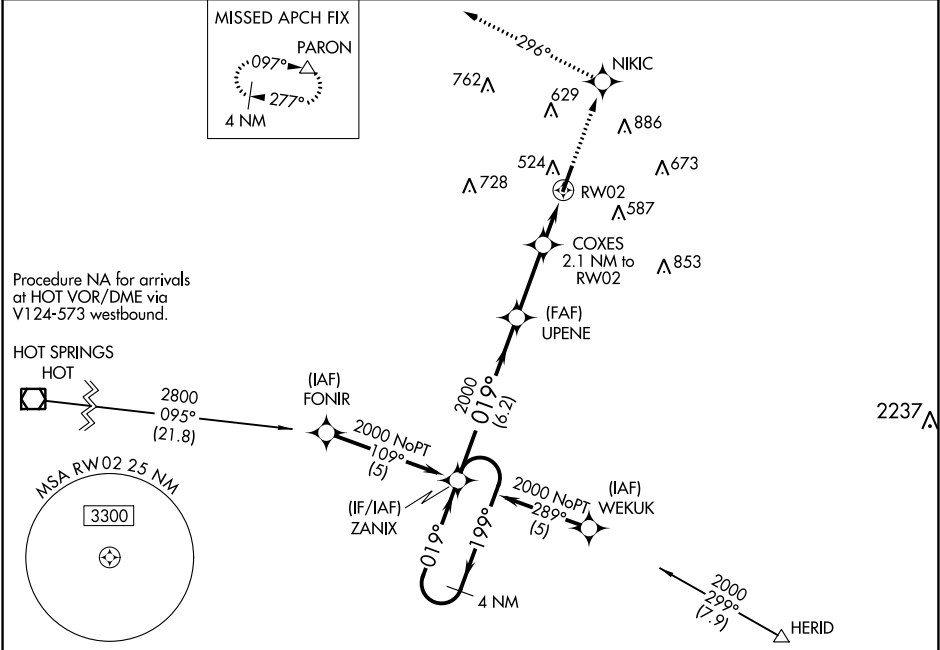
RNAV (GPS) RWY 2
SALINE COUNTY RGNL (SUZ)

NA

Baro-VNAV NA. DME/DME RNP-0.3 NA. Visibility reduction by helicopters NA. Use Little Rock/Bill and Hillary Clinton National/Adams Field altimeter setting; when not received, use Hot Springs altimeter setting and increase all DA 41 feet and all MDA 60 feet. Increase LPV and LNAV/VNAV visibility all Cats ¼ mile and LNAV visibility Cat D ¼ mile.

MISSED APPROACH: Climb to 2600 direct NIKIC and via 296° track to PARON and hold.

AWOS-3 132.125	LITTLE ROCK APP CON 119.5 306.2	UNICOM 122.8 (CTAF) 0
--------------------------	-------------------------------------------	---------------------------------



SC-1, 03 DEC 2020 to 31 DEC 2020

SC-1, 03 DEC 2020 to 31 DEC 2020