

LOC/DME I-FBS	APP CRS	Rwy Idg	8800
111.55	339°	TDZE	1273
Chan 52(Y)		Apt Elev	1288

ILS or LOC RWY 34

NORTHWEST ARKANSAS NATIONAL (XNA)

DME required.

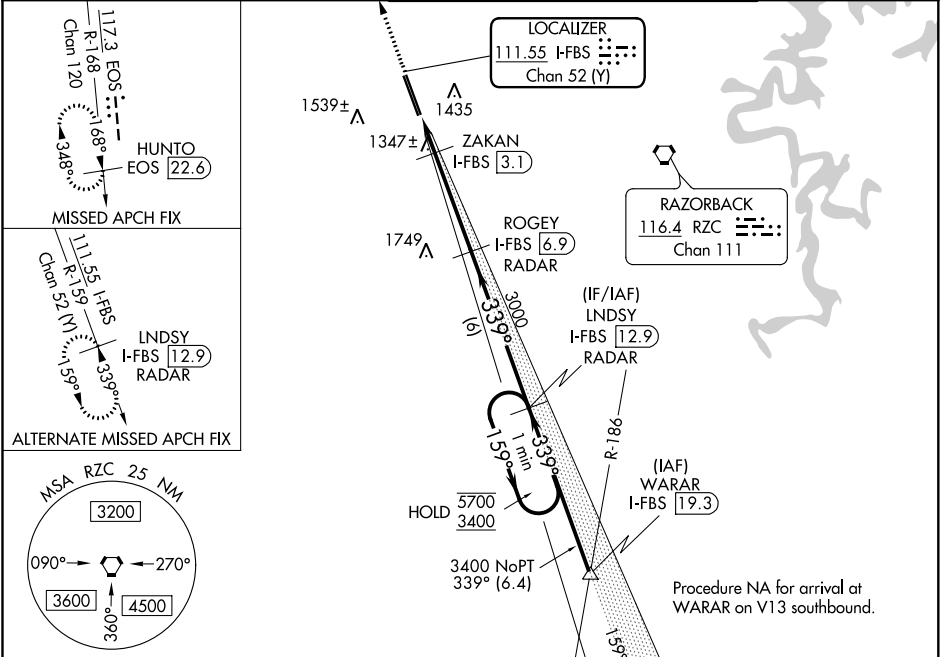
▼ For inop ALS, increase visibility S-ILS 34 Cat E to RVR 4000 and S-LOC 34 Cat C/D/E to RVR 5000.

▲ #RVR 1800 authorized with use of FD or AP or HUD to DA.

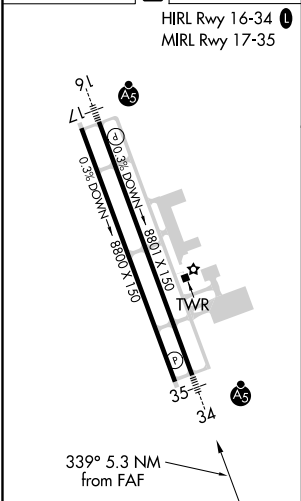
MALSR

MISSED APPROACH: Climb to 3400 on heading 339° and EOS VOR/DME R-168 to HUNTO/EOS VOR/DME 22.6 DME and hold.

ATIS	RAZORBACK APP CON *	NORTHWEST ARKANSAS NATIONAL TOWER*	GND CON
119.425	121.0 244.575	127.1 (CTAF) 0	121.9



ELEV 1288	D	TDZE 1273
-----------	---	-----------



3400	EOS R-168	HUNTO EOS 22.6	ROGEY I-FBS 6.9 RADAR	LNDYSY I-FBS 12.9 RADAR	One Minute Holding Pattern
hdg 339°					
*LOC only.	*I-FBS 1.6	*I-FBS 2.5	*I-FBS 3.1		
	0.9	0.6 NM	3.8 NM	6 NM	
CATEGORY	A	B	C	D	E
S-ILS 34 #	1473/24	200 (200-1/2)			
S-LOC 34	1600/24	327 (400-1/2)	1600/26	327 (400-1/2)	
CIRCLING	1740-1 452 (500-1)	1760-1 472 (500-1)	2040-2 1/4 752 (800-2 1/4)	2080-2 1/2 792 (800-2 1/2)	2080-2 3/4 792 (800-2 3/4)

SC-1, 03 DEC 2020 to 31 DEC 2020

SC-1, 03 DEC 2020 to 31 DEC 2020