

APP CRS  
354°

Rwy Idg  
TDZE  
Apt Elev

4006  
527  
527

RNAV (GPS) RWY 35  
SALLISAW MUNI (JSV)

T

NA

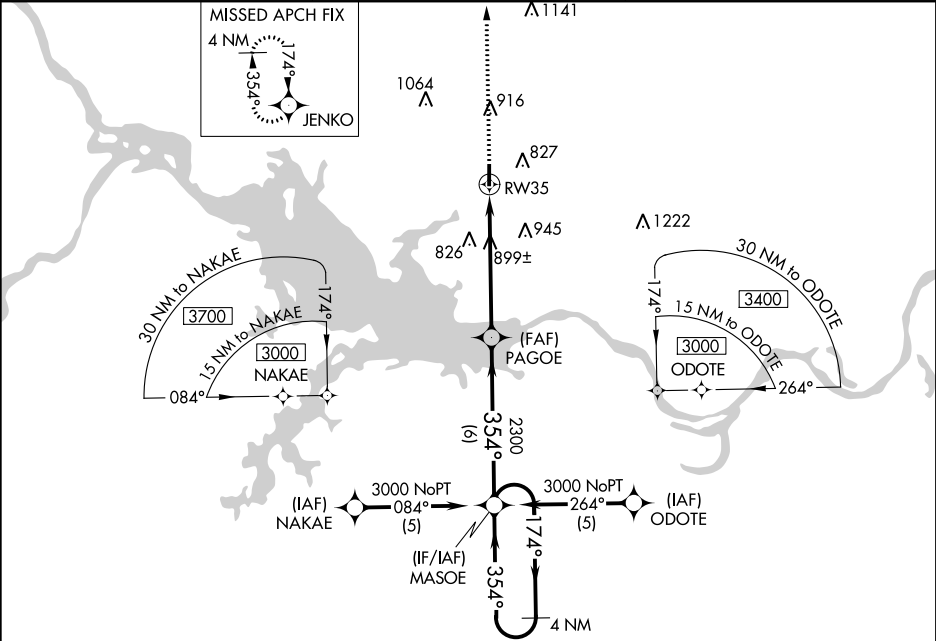
DME/DME RNP-0.3 NA. Night landing: Rwy 17 NA.  
Helicopter visibility reduction below ¾ SM NA.

MISSED APPROACH: Climb to 3100  
direct JENKO WP and hold.

AWOS-3  
118.475

RAZORBACK APP CON ★  
120.9 343.75

UNICOM  
122.7 (CTAF)



ELEV 527

TDZE 527

MIRL Rwy 17-35

35

354° to RW35

30 NM to MASOE  
3000  
4100  
30 NM to MASOE  
084°  
264°  
MASOE (NoPT)  
8 NM to MASOE

2645°  
3100  
JENKO

PAGOE  
RW35  
3.00° TCH 40  
354°  
3000  
174°  
4 NM Holding Pattern  
MASOE  
VGSi and descent angles not coincident (VGSi Angle 3.00/TCH 40).  
2300  
5.5 NM  
6 NM

| CATEGORY | A                  | B | C                    | D  |
|----------|--------------------|---|----------------------|----|
| LNAV MDA | 1160-1 633 (700-1) |   | 1160-1¾ 633 (700-1¾) | NA |
| CIRCLING | 1160-1 633 (700-1) |   | 1160-1¾ 633 (700-1¾) | NA |