

WAAS CH 90207 W35A	APP CRS 357°	Rwy Idg 5001 TDZE 874 Apt Elev 874
----------------------------------------	------------------------	---------------------------------------------------------------

RNAV (GPS) RWY 35
TAHLEQUAH MUNI (TQH)

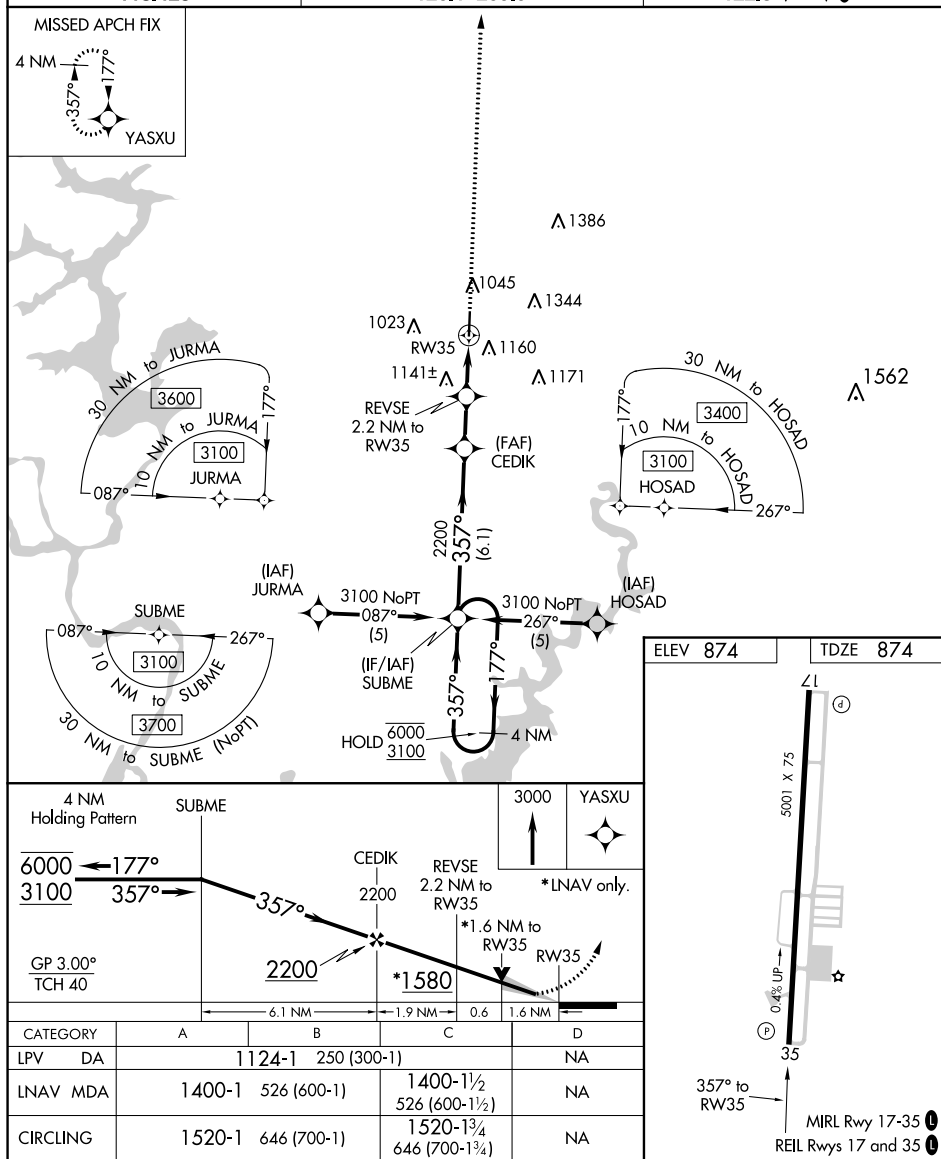
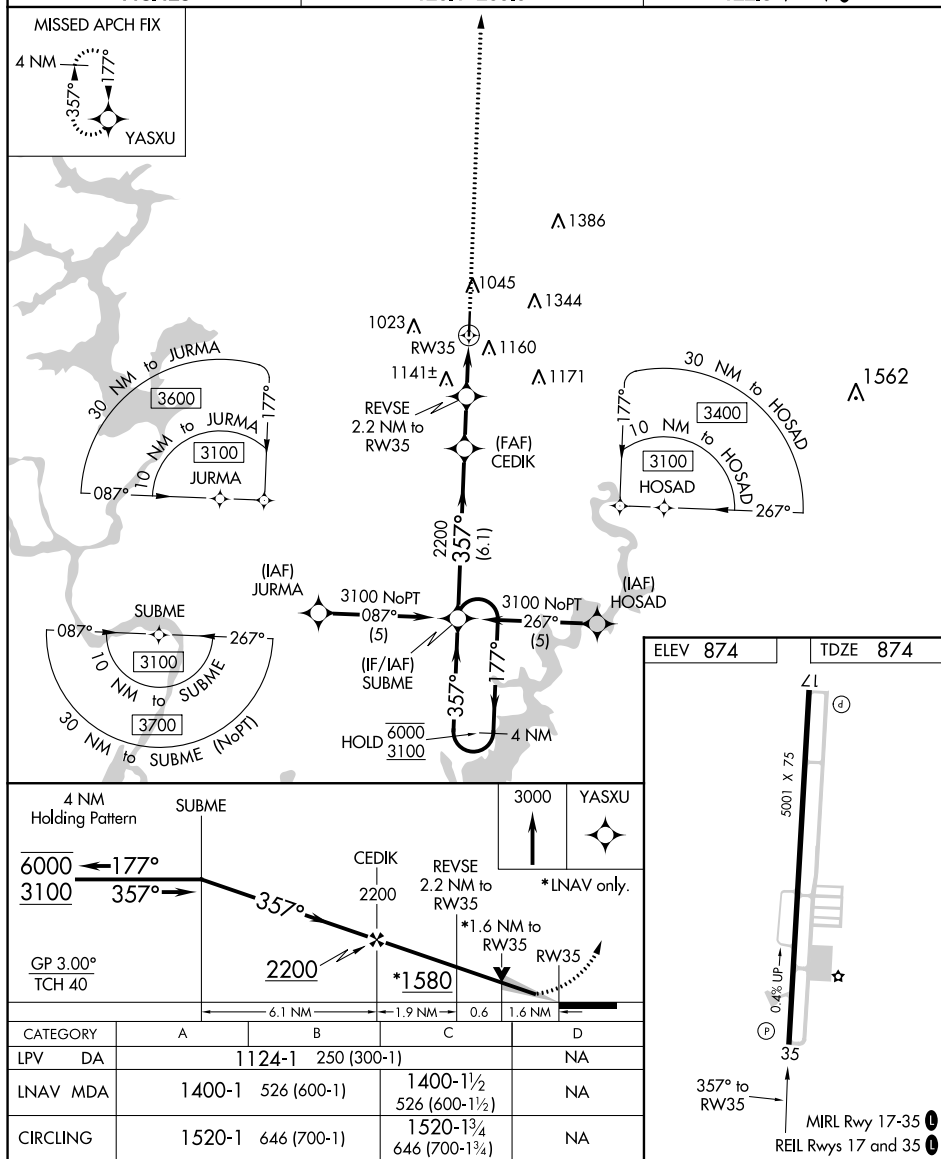
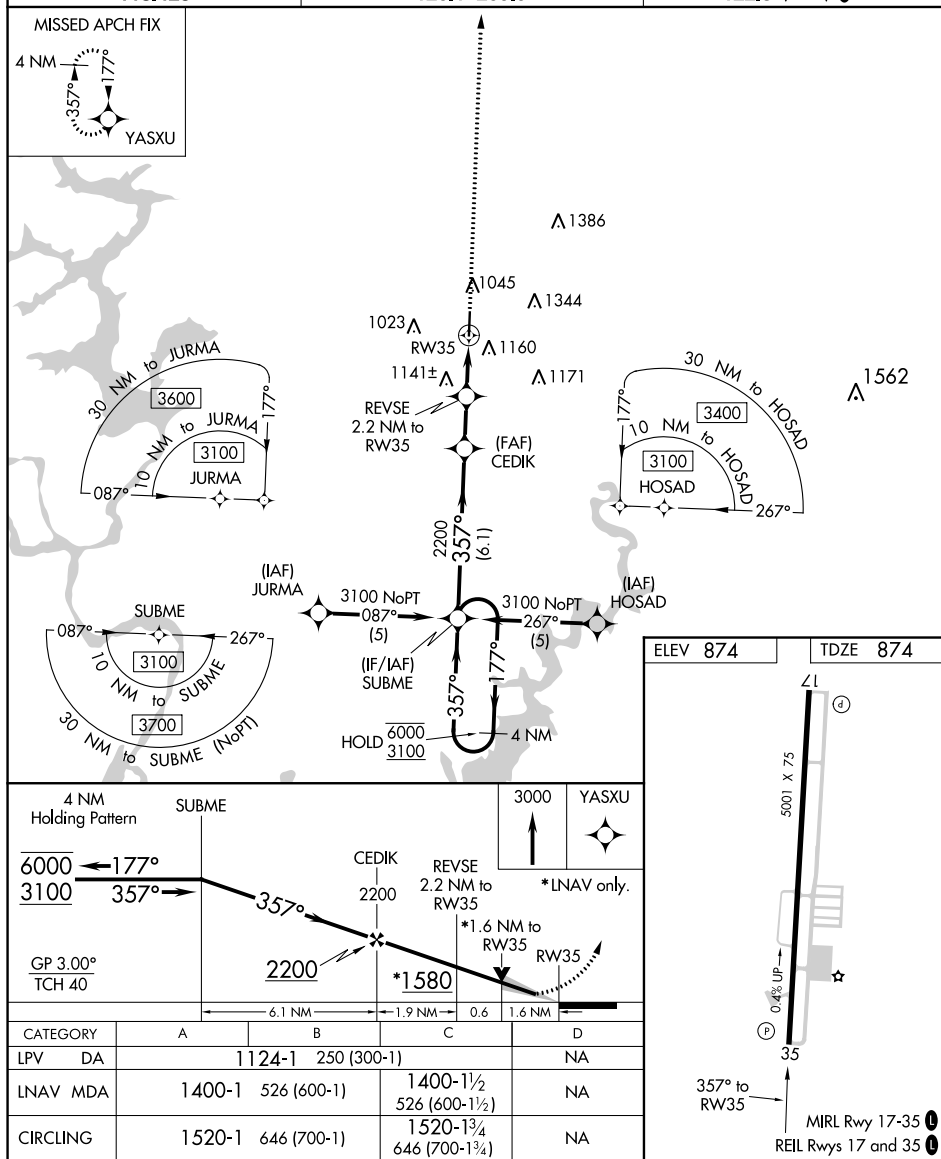
RNP APCH.

- T** When local altimeter setting not received, use Muskogee altimeter setting and increase all MDAs 100 feet and increase LNAV Cat C visibility ¼ mile, Circling Cat B ¼ mile and Cat C ½ mile. VDP NA when using Muskogee altimeter setting.

MISSED APPROACH: Climb to 3000 direct YASXU and hold.

AWOS-3
118,425

MEMPHIS CENTER
126.1 269.0

UNICOM
122.8 (CTAF) **L**

MISSED APCH FIX

4 NM
177°
357°
YASXU

APCH FIX

1023
RW35
1141±
REVSE
2.2 NM to RW35
(FAF)
CEDIK
2200
357°
(6.1)
3100 NoPT
087°
(5)
(IF/IAF)
SUBME
3100 NoPT
267°
(5)
(IAF)
HOSAD
3100
3700
30 NM to SUBME (NoPT)
10 NM to SUBME
087°
267°
SUBME
10 NM to JURMA
3100
3600
30 NM to JURMA
087°
177°
JURMA
10 NM to HOSAD
3100
3400
30 NM to HOSAD
177°
267°
HOSAD
1386
1344
1160
1171
1562

4 NM Holding Pattern

SUBME

3000
YASXU

357°
177°
357°
2200
CEDIK
REVSE
2.2 NM to RW35
1.6 NM to RW35
RW35
*1580
*1.6 NM to RW35
RW35
0.6
1.6 NM
0.4% Up
35
MIRL Rwy 17-35
REIL Rws 17 and 35

CATEGORY	A	B	C	D
LPV DA	1124-1	250 (300-1)		NA
LNAV MDA	1400-1	526 (600-1)	1400-1½ 526 (600-1½)	NA
CIRCLING	1520-1	646 (700-1)	1520-1¾ 646 (700-1¾)	NA

MISSED APCH FIX

4 NM
177°
357°
YASXU

APCH FIX

1023
RW35
1141±
REVSE
2.2 NM to RW35
(FAF)
CEDIK
2200
357°
(6.1)
3100 NoPT
087°
(5)
(IF/IAF)
SUBME
3100 NoPT
267°
(5)
(IAF)
HOSAD
3100
3700
30 NM to SUBME (NoPT)
10 NM to SUBME
087°
267°
SUBME
10 NM to JURMA
3100
3600
30 NM to JURMA
087°
177°
JURMA
10 NM to HOSAD
3100
3400
30 NM to HOSAD
177°
267°
HOSAD
1386
1344
1160
1171
1562

4 NM Holding Pattern

SUBME

3000
YASXU

357°
177°
357°
2200
CEDIK
REVSE
2.2 NM to RW35
1.6 NM to RW35
RW35
*1580
*1.6 NM to RW35
RW35
0.6
1.6 NM
0.4% Up
35
MIRL Rwy 17-35
REIL Rws 17 and 35

CATEGORY	A	B	C	D
LPV DA	1124-1	250 (300-1)		NA
LNAV MDA	1400-1	526 (600-1)	1400-1½ 526 (600-1½)	NA
CIRCLING	1520-1	646 (700-1)	1520-1¾ 646 (700-1¾)	NA