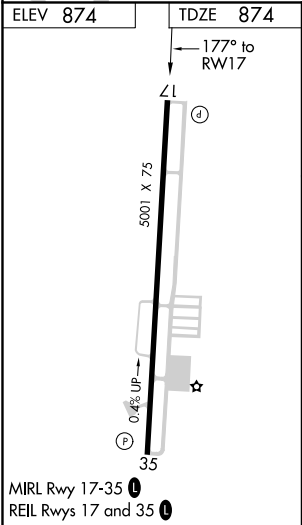
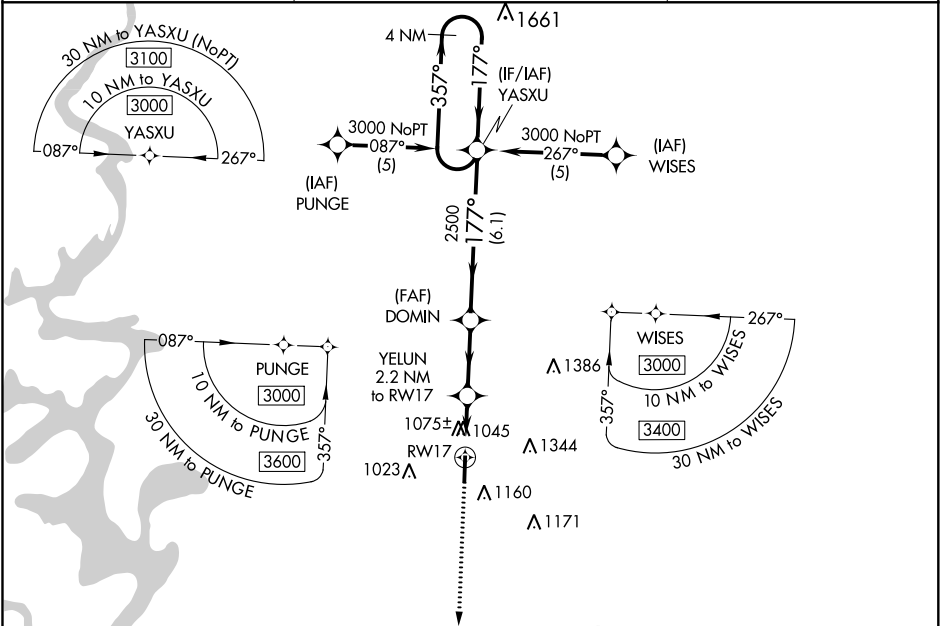


| | | |
|---------|----------|------|
| APP CRS | Rwy Idg | 5001 |
| 177° | TDZE | 874 |
| | Apt Elev | 874 |

RNAV (GPS) RWY 17

Tahlequah Muni (TQH)

| | | |
|---|---|--|
| <div><div><div></div><div>A</div></div><div>DME/DME RNP-0.3 NA. Visibility reduction by helicopters NA. When local altimeter setting not received, use Muskogee altimeter setting and increase all MDAs 100 feet and increase LNAV Cat C visibility ¼ mile, Circling Cat B ½ mile and Cat C ½ mile.</div></div> | MISSED APPROACH: Climb to 3100 direct SUBME and hold. | |
| <div><div><div>AWOS-3</div><div>118.425</div></div></div> | <div><div><div>MEMPHIS CENTER</div><div>126.1 269.0</div></div></div> | <div><div><div>UNICOM</div><div>122.8 (CTAF) <div></div></div></div></div> |



| | | | | |
|----------|--------|--|-------------------------|------|
| 3100 | SUBME | VGSI and descent angles not coincident (VGSI Angle 3.50/TCH 39). | | 4 NM |
| | | YASXU Holding Pattern | | |
| | | DOMIN | | |
| | | YELUN 2.2 NM to RW17 | | |
| | | RW17 | | |
| | | 1600 | | |
| | | 2500 | | |
| | | 3000 | | |
| | | 357° | | |
| | | 177° | | |
| | | 2.2 NM | | |
| | | 2.7 NM | | |
| | | 6.1 NM | | |
| CATEGORY | A | B | C | D |
| LNAV MDA | 1380-1 | 506 (600-1) | 1380-1½ 506 (600-1½) | NA |
| CIRCLING | 1520-1 | 646 (700-1) | 1520-1¾ 646 (700-1¾) | NA |