

APP CRS  
356°

Rwy Idg	<b>5200</b>
TDZE	<b>830</b>
Apt Elev	<b>831</b>

# RNAV (GPS) RWY 36

## GROVE MUNI (GMJ)

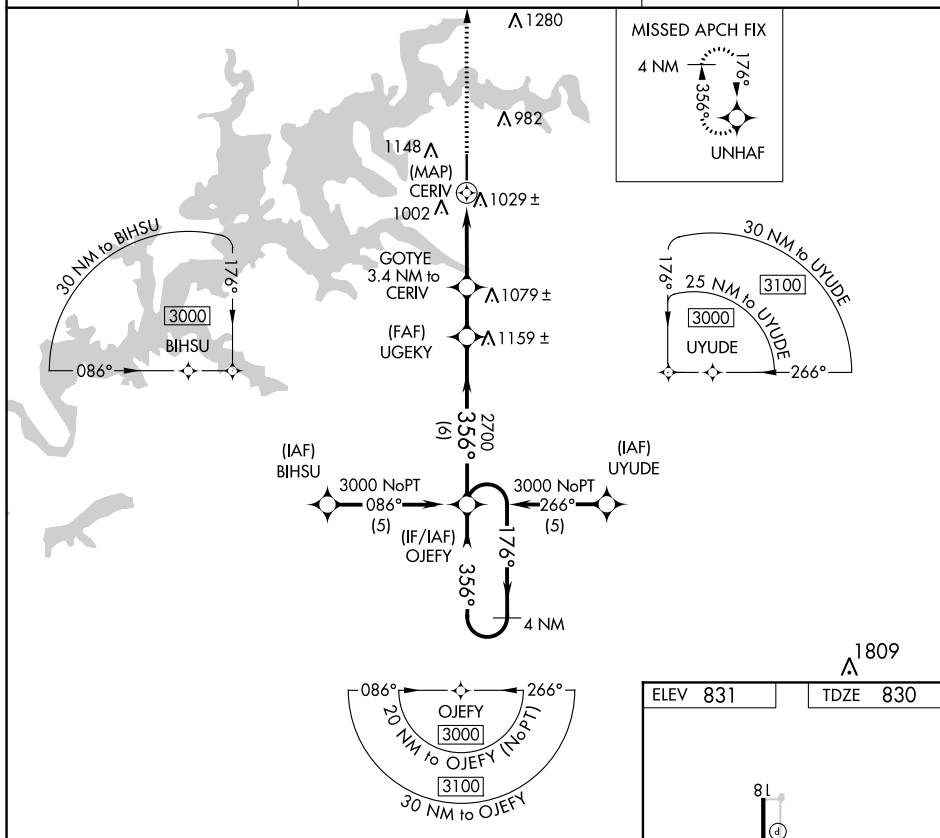



DME/DME RNP-0.3 NA.

**MISSED APPROACH:** Climb to 3000 direct UNHAF and hold.

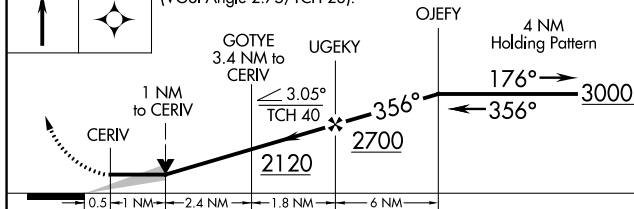
AWOS-3  
119.025

KANSAS CITY CENTER  
128.8 354.1

UNICOM  
122.8 (CTAF)

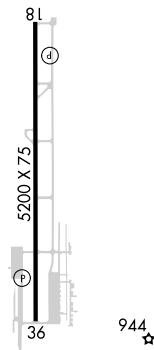
3000	UNHAF
	

VGSI and descent angles not coincident  
(VGSI Angle 2.75/TCH 28).



CATEGORY	A	B	C	D
LNAV MDA	1280-1	450 (500-1)	1280-1¼ 450 (500-1¼)	NA
<b>C</b> CIRCLING	1500-1	669 (700-1)	1500-1¾ 669 (700-1¾)	NA

ELEV	831			A <sup>1809</sup>
TDZE	830			



GROVE, OKLAHOMA  
Orig-A 13AUG20

36°36'N-94°44'W

GROVE MUNI (GMJ)  
RNAV (GPS) RWY 36