

APP CRS
354°

Rwy Idg
TDZE
Apt Elev

4000
984
985

RNAV (GPS) RWY 35

CHANDLER RGNL (CQB)

RNP APCH.

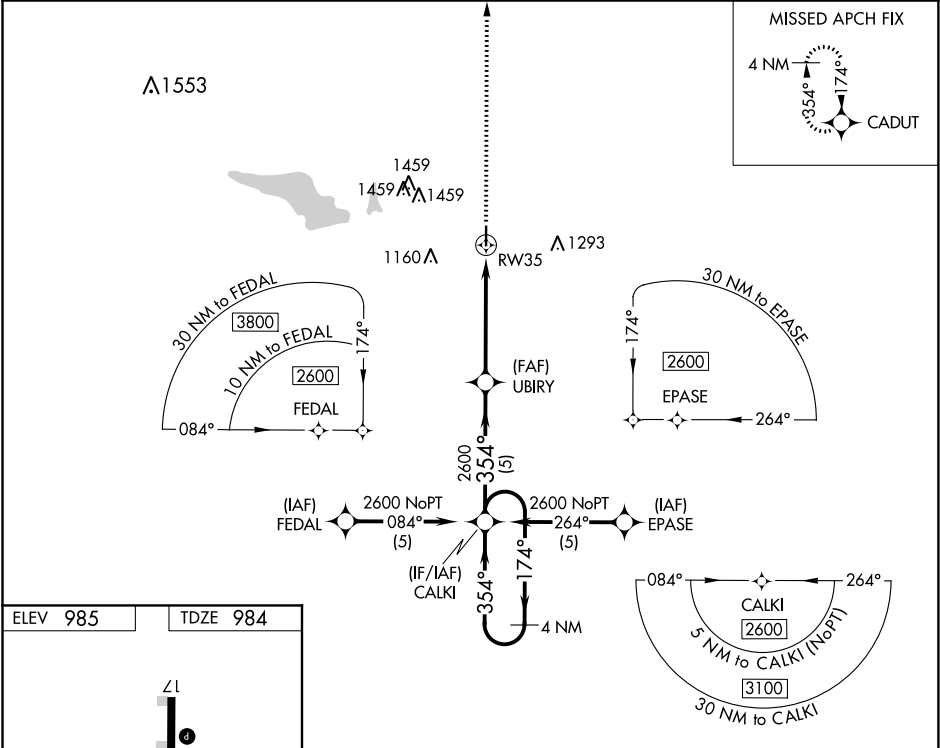
▽

▲ NA

When local altimeter setting not received, use Shawnee altimeter setting and increase all MDA 80 feet; increase LNAV Cat C visibility 1/8 SM. VDP NA with Shawnee Rgnl altimeter setting.

MISSED APPROACH: Climb to 2600 direct CADUT and hold.

| | | |
|-------------------|-----------------------------------|-----------------|
| AWOS-3 119.275 | KANSAS CITY CENTER 127.8 319.1 | CTAF 122.9 0 |
|-------------------|-----------------------------------|-----------------|



2600

CADUT

VGSI and descent angles not coincident (VGSI Angle 3.00/TCH 42).

*LNAV only.

*1.1 NM to RW35

UBIRY

CALKI

4 NM Holding Pattern

354°

174°

2600

GP 3.00° TCH 30

| | | | | |
|--------------|--------------------|---|----|---|
| CATEGORY | A | B | C | D |
| GLS PA DA | NA | | | |
| LNAV/VNAV DA | NA | | | |
| LNAV MDA | 1320-1 335 (400-1) | | NA | |

SC-1, 03 DEC 2020 to 31 DEC 2020

SC-1, 03 DEC 2020 to 31 DEC 2020