

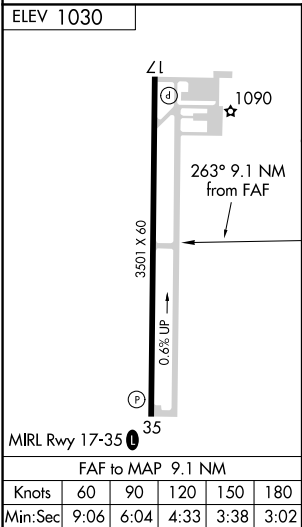
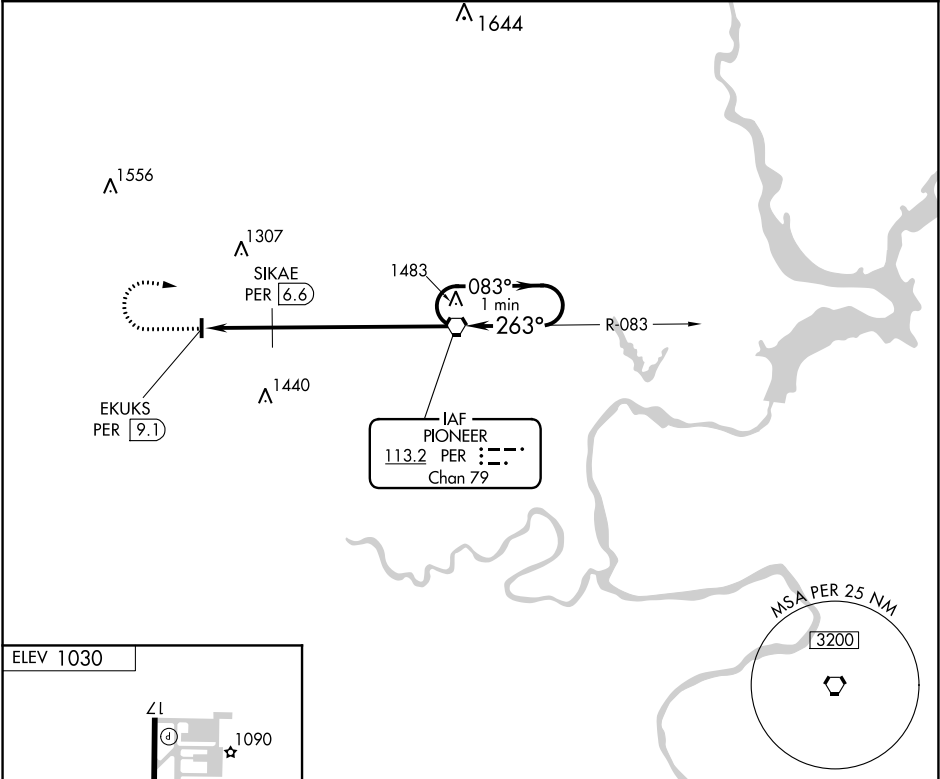
VORTAC PER 113.2 Chan 79	APP CRS 263°	Rwy Idg TDZE Apt Elev N/A N/A 1030
--	------------------------	--


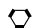
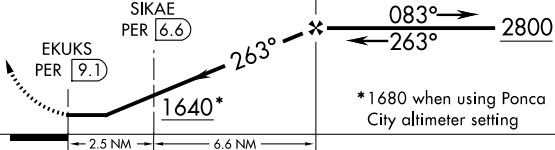
VOR-A

BLACKWELL-TONKAWA MUNI (BKN)

<p>⚠ When local altimeter setting not received, use Ponca City altimeter setting and increase all MDA 40 feet.</p>	<p>MISSED APPROACH: Climb to 2800 then right turn direct PER VORTAC and hold.</p>
---	---

AWOS-3 120.575	KANSAS CITY CENTER 127.8 319.1	UNICOM 122.8 (CTAF) 0
--------------------------	--	--



2800 ↑	PER  	PER VORTAC	One Minute Holding Pattern	
 <p>SIKAE PER <u>6.6</u></p> <p>EKUKS PER <u>9.1</u></p> <p>263°</p> <p>083°</p> <p>2800</p> <p>263°</p> <p>1640*</p> <p>*1680 when using Ponca City altimeter setting</p>				
CATEGORY	A	B	C	D
CIRCLING	1640-1	610 (700-1)	1640-1 ³ / ₄ 610 (700-1 ³ / ₄)	NA
SIKAE FIX MINIMUMS				
CIRCLING	1440-1 410 (500-1)	1480-1 450 (500-1)	1480-1 ¹ / ₂ 450 (500-1 ¹ / ₂)	NA

SC-1, 03 DEC 2020 to 31 DEC 2020

SC-1, 03 DEC 2020 to 31 DEC 2020