

WAAS CH <b>61119</b> <b>W35A</b>	APP CRS <b>354°</b>	Rwy Idg <b>3501</b> TDZE <b>1026</b> Apt Elev <b>1030</b>
--	------------------------	---

# RNAV (GPS) RWY 35

## BLACKWELL-TONKAWA MUNI (BKN)

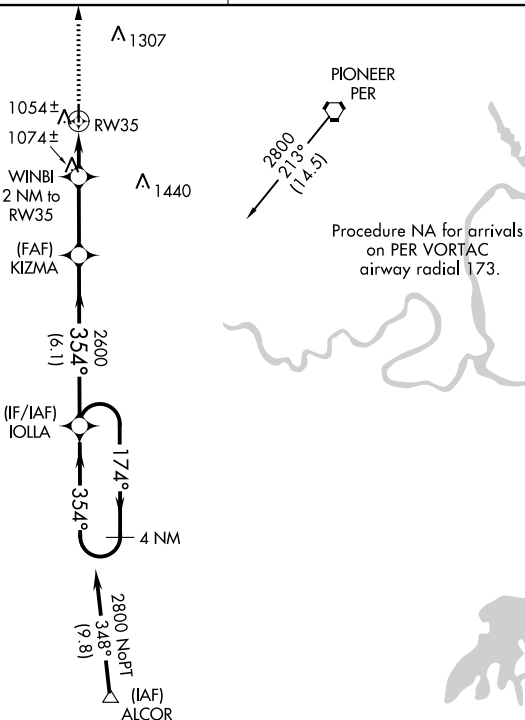
RNP APCH.

**▼** For uncompensated Baro-VNAV systems, LNAV/VNAV NA below -17°C or above 54°C. When local altimeter setting not received, use Ponca City altimeter setting and increase all DA 31 feet and all MDA 40 feet and LNAV/VNAV all Cats visibility ¼ mile. Baro-VNAV and VDP NA when using Ponca City altimeter setting.

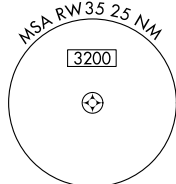
**MISSED APPROACH:** Climb to 2800 direct E WAIT and hold.

AWOS-3 <b>120.575</b>	KANSAS CITY CENTER <b>127.8 319.1</b>	UNICOM <b>122.8 (CTAF) 0</b>
--------------------------	--	---------------------------------

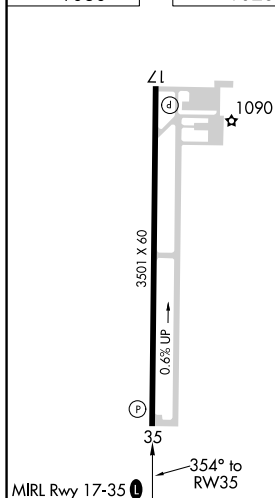
MISSED APCH FIX



Procedure NA for arrivals  
on PER VORTAC  
airway radial 173.

2109<sub>A</sub>

ELEV 1030		TDZE 1026
-----------	--	-----------



2800  
↑  
EWAIT

VGSI and RNAV glidepath not coincident.

WINBI  
2 NM to RW35

KIZMA  
2600

IOLLA

4 NM Holding Pattern

174°  
← 354° → 2800

\*1 NM to RW35

RW35

1680\*

354°  
2600

GP 3.00°  
TCH 40

1 NM 1 NM 2.8 NM 6.1 NM

CATEGORY	A	B	C	D
LPV DA	1276-1	250 (300-1)		NA
LNAV/ VNAV DA	1324-1	298 (300-1)		NA
LNAV MDA	1340-1	314 (400-1)		NA