

SAND SPRINGS, OKLAHOMA

AL-6472 (FAA)

19059

| | | |
|--|------------------------|---|
| WAAS CH 57912 W35A | APP CRS 349° | Rwy Idg 5799 TDZE 892 Apt Elev 892 |
|--|------------------------|---|

RNAV (GPS) RWY 35

WILLIAM R POGUE MUNI (OWP)

RNP APCH.

T Rwy 35 helicopter visibility reduction below 1 SM NA. For uncompensated Baro-VNAV systems, LNAV/VNAV NA below -16°C or above 54°C. Procedure NA at night. Circling NA for Cat C east of Rwy 17-35. Inop table does not apply.

ODALS

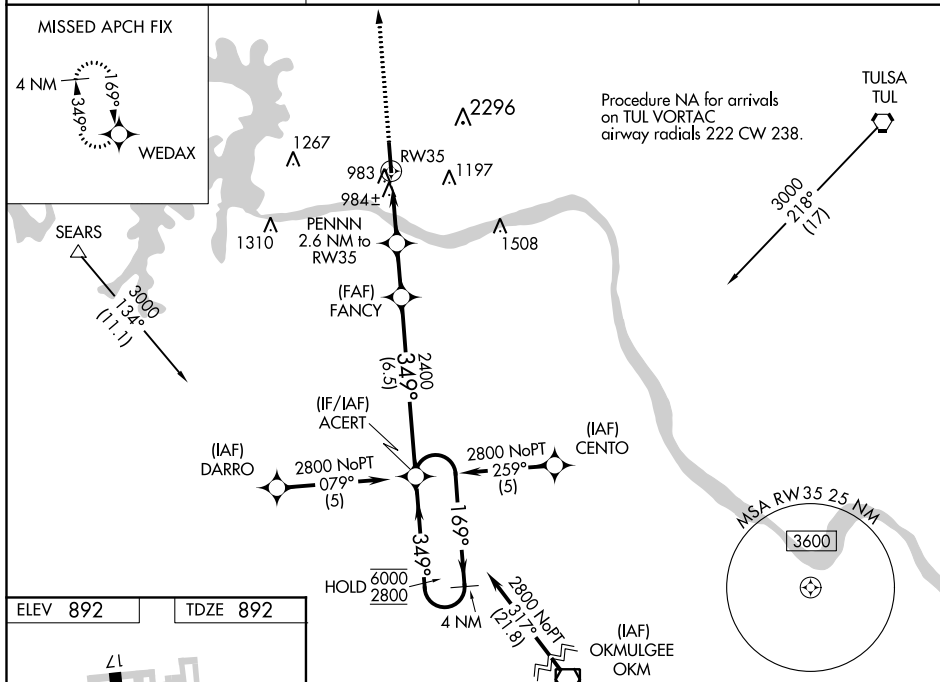


MISSED APPROACH: Climb to 2800 direct WEDAX and hold.

AWOS-3
118.325

TULSA APP CON
124.0 338.3

UNICOM
122.7 (CTAF)



| CATEGORY | A | B | C | D |
|-------------------|---------|--------------|-------------------------|----|
| LPV DA | 1202-1 | 310 (400-1) | | NA |
| LNAV/VNAV DA | 1317-1½ | 425 (500-1½) | | NA |
| LNAV MDA | 1240-1 | 348 (400-1) | | NA |
| C CIRCLING | 1440-1 | 548 (600-1) | 1440-1½ 548 (600-1½) | NA |

SAND SPRINGS, OKLAHOMA
Orig-A 28FEB19

36°11'N-96°09'W

WILLIAM R POGUE MUNI (OWP)
RNAV (GPS) RWY 35

SC-1, 03 DEC 2020 to 31 DEC 2020