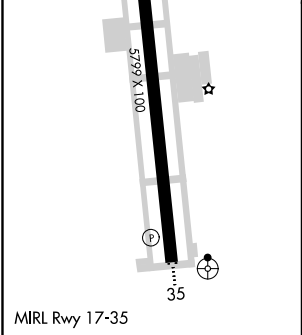
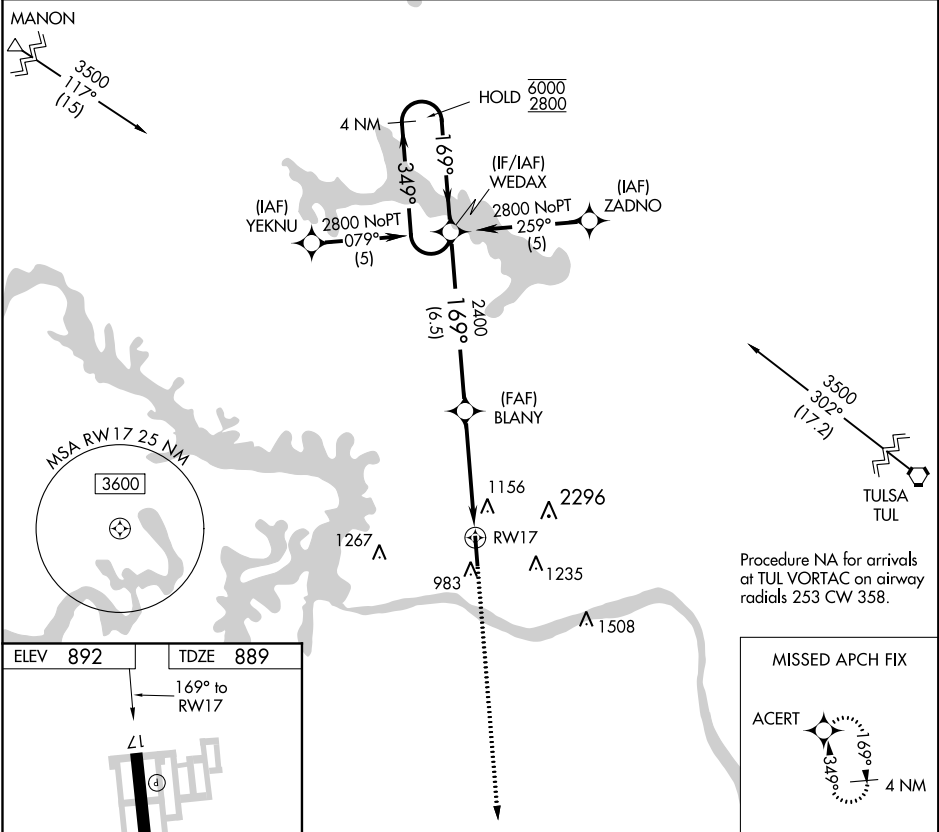


APP CRS	Rwy Idg	5799
169°	TDZE	889
	Apt Elev	892

RNAV (GPS) RWY 17  
WILLIAM R POGUE MUNI (OWP)

RNP APCH.	Rwy 17 helicopter visibility reduction below 1 SM NA. Procedure NA at night. Circling NA for Cat C east of Rwy 17-35.	MISSED APPROACH: Climb to 2800 direct ACERT and hold.
-----------	--	---

AWOS-3 118.325	TULSA APP CON 124.0 338.3	UNICOM 122.7 (CTAF)
-------------------	------------------------------	------------------------



4 NM Holding Pattern	WEDAX	VGSI and descent angles not coincident (VGSI Angle 3.00/TCH 31).	2800	ACERT
6000	349°	169°	169°	
2800		169°	2400	
		3.04°	TCH 45	
	6.5 NM		4.6 NM	
CATEGORY	A	B	C	D
LNAV MDA	1420-1	531 (600-1)	1420-1½ 531 (600-1½)	NA
CIRCLING	1440-1	548 (600-1)	1440-1½ 548 (600-1½)	NA