

APP CRS
172°

Rwy Idg
TDZE
Apt Elev

4000
1822
1822

RNAV (GPS) RWY 17
BUFFALO MUNI (BFK)

▼

NA

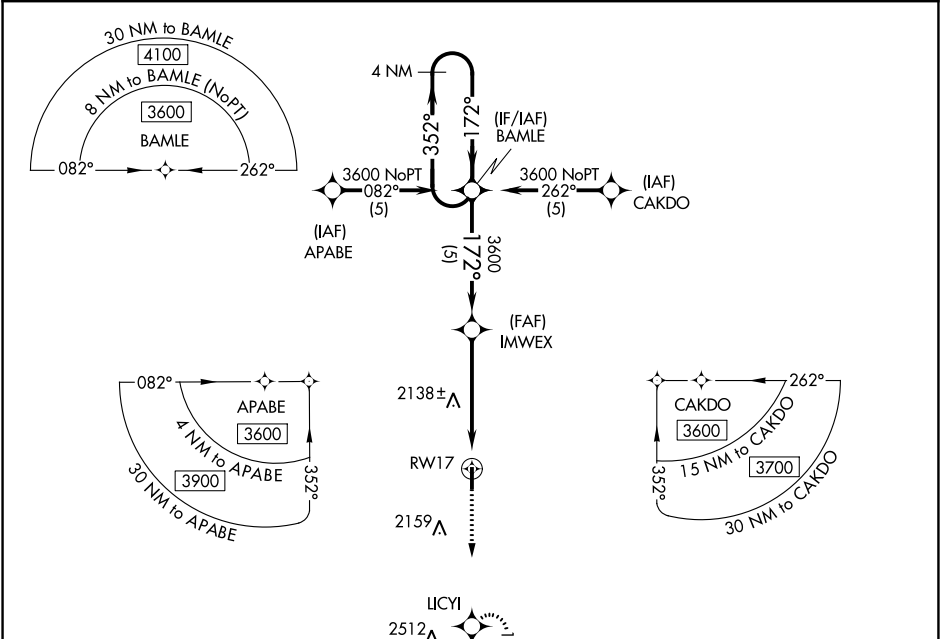
DME/DME RNP-0.3 NA. Use Woodward/West Woodward altimeter setting; if not received, procedure not authorized.

MISSED APPROACH: Climb to 3800 direct LICY WPT and hold.

AWOS-3
118.425

KANSAS CITY CENTER
126.95 379.2

CTAF
122.9 0



ELEV 1822

TDZE 1822

172° to RWY 17

4000 X 60

0.7% UP

35

MIRL Rwy 17-35 0

4 NM Holding Pattern

BAMLE

IMWEX

3800

LICY

3600

352°

172°

3600

172°

3.28°

TCH 40

5 NM

5 NM

RWY 17

CATEGORY	A	B	C	D
LNNAV MDA	2500-1	678 (700-1)	2500-2 678 (700-2)	NA
CIRCLING	2500-1	678 (700-1)	2500-2 678 (700-2)	NA

SC-1, 03 DEC 2020 to 31 DEC 2020

SC-1, 03 DEC 2020 to 31 DEC 2020