

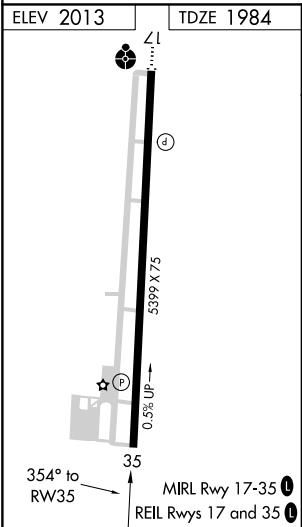
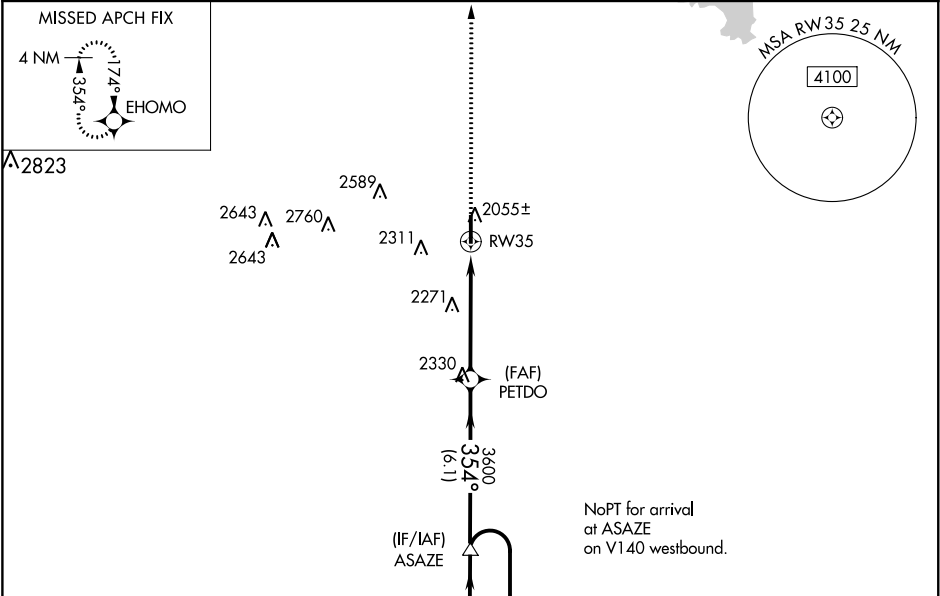
WAAS CH 53508 W35A	APP CRS 354°	Rwy Idg TDZE 1984 Apt Elev 2013
--	------------------------	---

RNAV (GPS) RWY 35

ELK CITY RGNL BUSINESS (ELK)

RNP APCH.	MISSED APPROACH: Climb to 4000 direct EHOMO and hold.
<div><div>▼</div><div>Rwy 35 helicopter visibility reduction below ¾ SM NA. For uncompensated Baro-VNAV systems, LNAV/VNAV NA below -18°C or above 54°C.</div></div>	

AWOS-3 118.225	FORT WORTH CENTER 128.4 269.37	UNICOM 122.8 (CTAF) 0
--------------------------	--	---------------------------------



4000	EHOMO	VGSI and RNAV glidepath not coincident (VGSI Angle 3.50/TCH 61).				4 NM
*LNAV only.		*1.6 NM to RW35	PETDO	3600	354°	ASAZE Holding Pattern
RW35		1.6 NM	3.4 NM	6.1 NM	174°	6000
					354°	4000
						GP 3.00° TCH 50
CATEGORY	A	B	C	D		
LPV DA	2234-7⁄8		250 (300-7⁄8)			
LNAV/VNAV DA	2377-13⁄8		393 (400-13⁄8)			
LNAV MDA	2640-1	656 (700-1)	2640-17⁄8	656 (700-17⁄8)		
CIRCLING	2640-1 627 (700-1)	2680-1 667 (700-1)	2680-13⁄4 667 (700-13⁄4)	2940-3 927 (1000-3)		